

BUILD-TO-SUIT COLLEGE PARK

Livonia, Michigan



FEATURES:

This 22.4 acre parcel is located in a premier commercial office park within minutes from the Haggerty Road business corridor and Schoolcraft College.

- ❖ I-275 freeway frontage, between 6 and 7 Mile Roads
- ❖ Last undeveloped parcels in the park
- ❖ Class "A" commercial office park

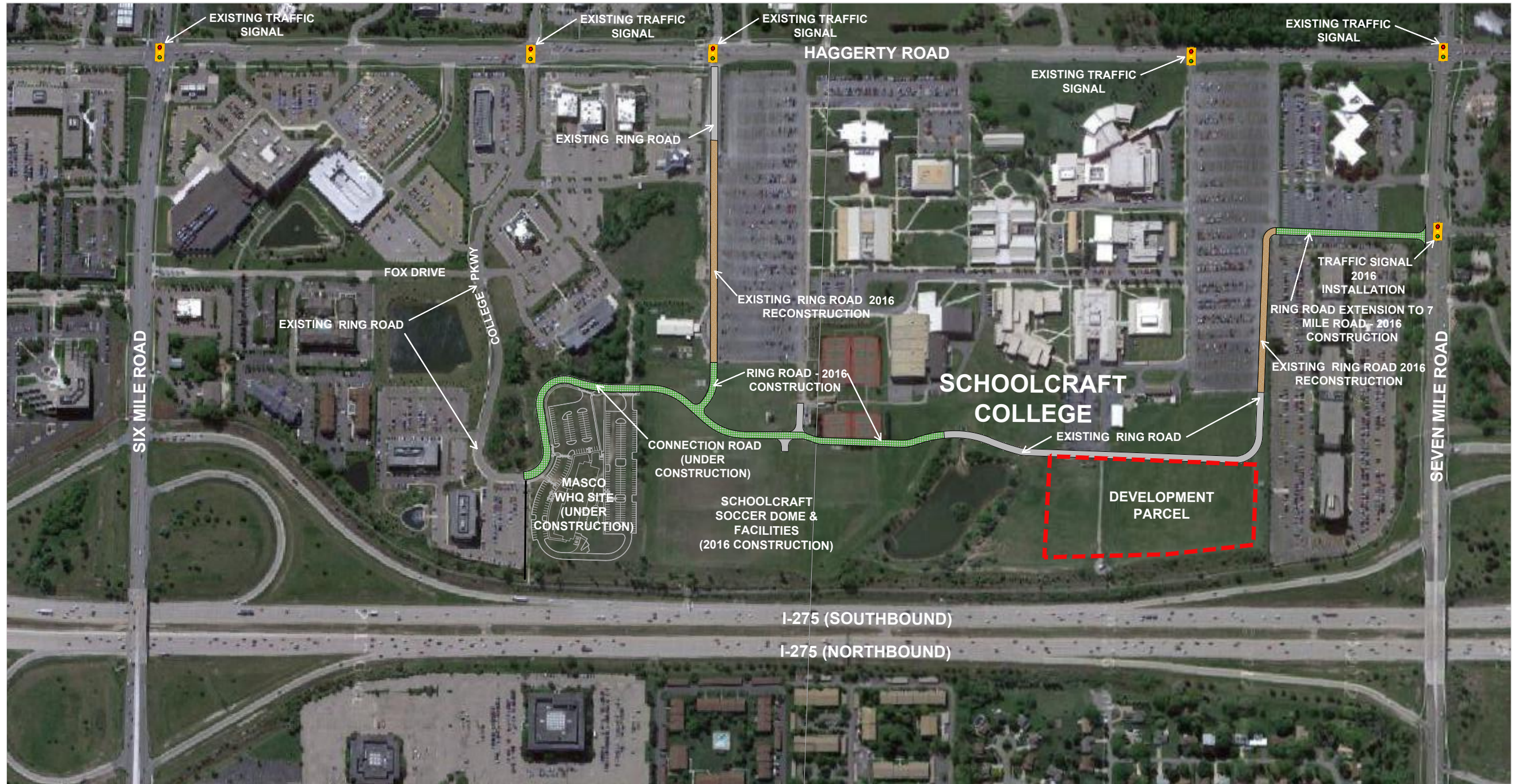
FOR MORE INFORMATION

Jeffrey Schostak

Vice President & Director of Corporate Real Estate

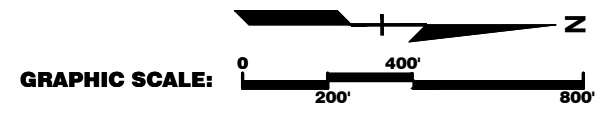
248.357.6198

Schostakjj@schostak.com



SCHOOLCRAFT COLLEGE
 NORTHWEST DEVELOPMENT PARCEL EXHIBIT

MAY 12, 2016



COLLEGE PARK – BUILD-TO-SUIT



College Park

Address

Livonia

City

Wayne

County

22.4 Acres

Size

PO (High-Rise Professional Office)

Zoning

COMMENTS:

- Class “A” Commercial Office Park
- Home to MASCO Global Headquarters
- Freeway frontage (I-275), between 6 and 7 Mile Roads
- Brand new entrance off 7 Mile Road and Haggerty Road
 - Last undeveloped parcels in the park
- Join TCF Bank, Trinity Communities, Market Strategies and First Place Bank
 - Schoolcraft College state-of-the-art fitness center
 - Tier 4 data center on Schoolcraft campus
- On-site amenities include: Mitchell’s, Bravo, Fleming’s, Claddagh, Potbelly and Marriott

CONTACT INFORMATION:

Jeffrey Schostak

Vice President & Director of Corporate Real Estate

248.357.6198

Schostakjj@schostak.com