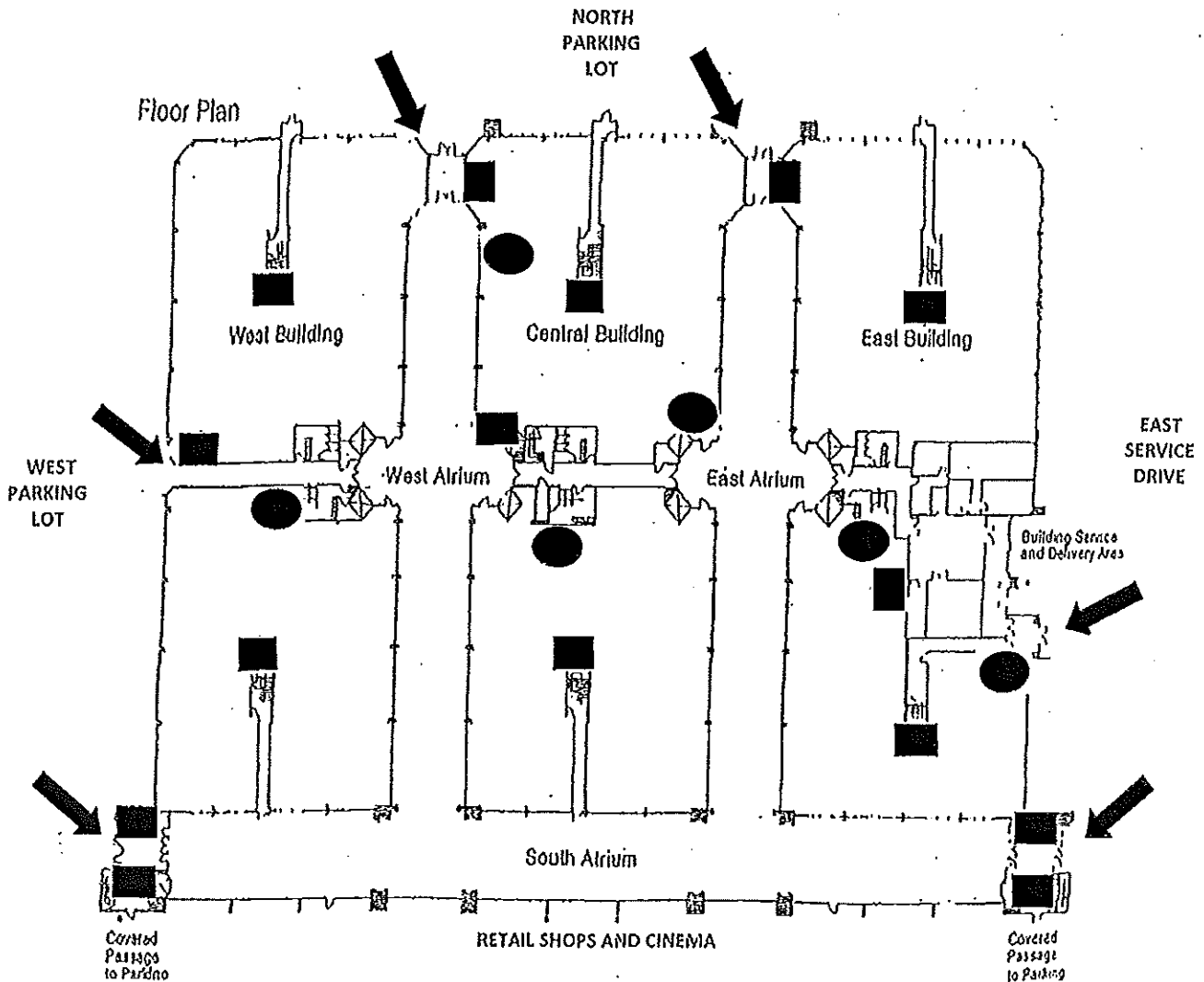
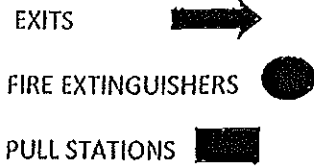


LAUREL PARK

TO ALERT THE BUILDING OF A FIRE

1. Call the Fire Dept. at 911 and Security at 734-953-1077.
2. Attempt to extinguish the fire, if minor.
3. Isolate the fire by closing the doors in the fire area.
4. Assist people in the immediate fire area to safety.
5. Evacuate by leading people calmly & quickly through the nearest stairwell or pre-planned escape route.
6. **DO NOT** use elevators.
7. If the pre-planned escape route is full of smoke, direct people to an alternate stairwell or secondary escape route.
8. Do not attempt re-entry until the all clear signal is given by the Fire Department.



LAUREL PARK PLACE OFFICE COMPLEX

Laurel Park Dr. N. Livonia, MI

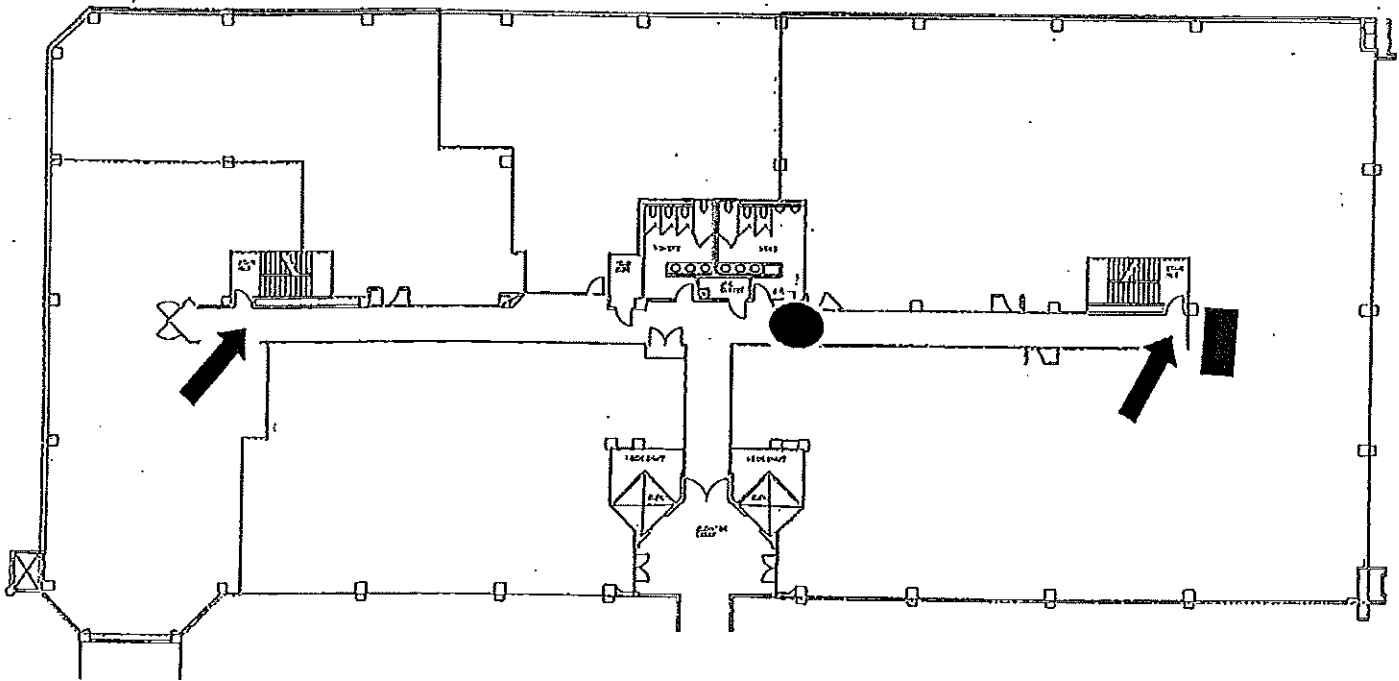
MAIN FLOOR

LAUREL PARK

TO ALERT THE BUILDING OF A FIRE

1. Call the Fire Dept. at 911 and Security at 734-953-1077.
2. Attempt to extinguish the fire, if minor.
3. Isolate the fire by closing the doors in the fire area.
4. Assist people in the immediate fire area to safety.
5. Evacuate by leading people calmly & quickly through the nearest stairwell or pre-planned escape route.
6. **DO NOT** use elevators.
7. If the pre-planned escape route is full of smoke, direct people to an alternate stairwell or secondary escape route.
8. Do not attempt re-entry until the all clear signal is given by the Fire Department.

- STAIRWELL →
- FIRE EXTINGUISHERS ●
- PULL STATIONS ■



LAUREL PARK PLACE OFFICE COMPLEX

Laurel Park Dr. N.

Livonia, MI

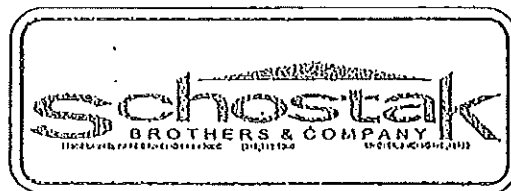
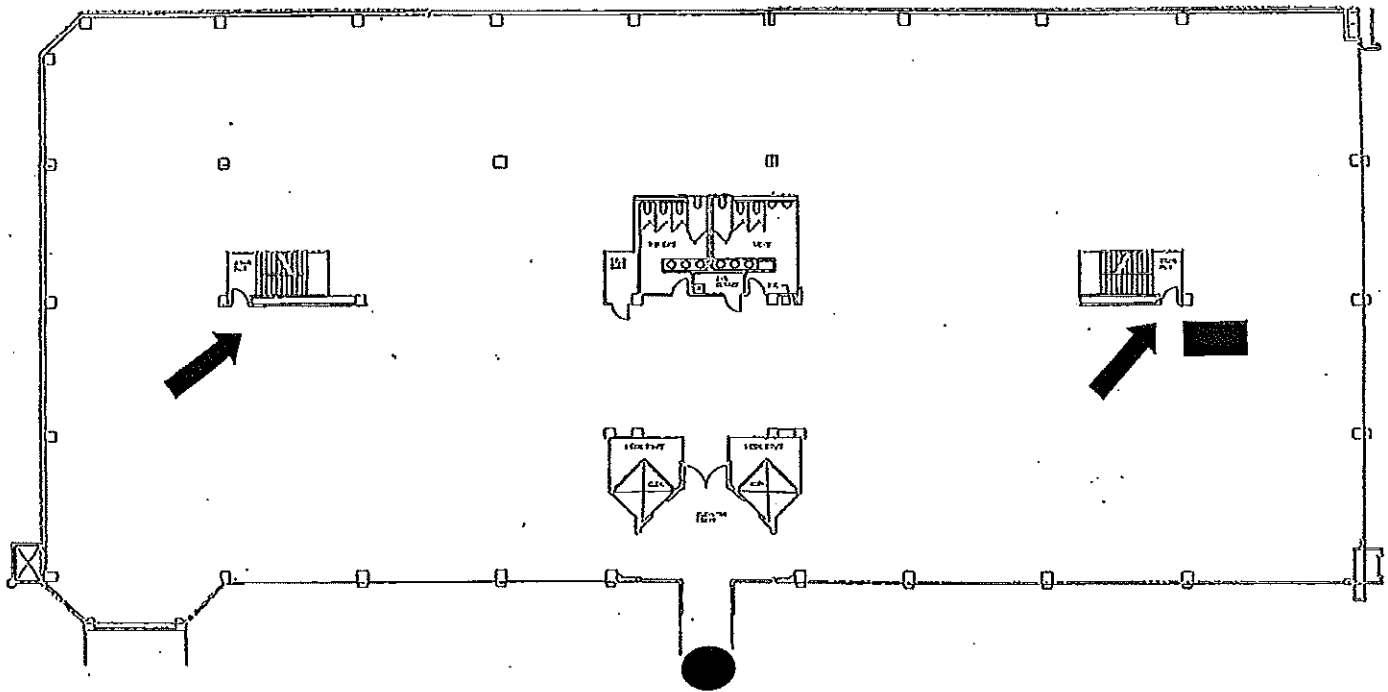
EAST TOWER – FLOORS 2 AND 3

LAUREL PARK

TO ALERT THE BUILDING OF A FIRE

- STAIRWELL →
- FIRE EXTINGUISHERS ●
- PULL STATIONS ■

1. Call the Fire Dept. at 911 and Security at 734-953-1077.
2. Attempt to extinguish the fire, if minor.
3. Isolate the fire by closing the doors in the fire area.
4. Assist people in the immediate fire area to safety.
5. Evacuate by leading people calmly & quickly through the nearest stairwell or pre-planned escape route.
6. **DO NOT** use elevators.
7. If the pre-planned escape route is full of smoke, direct people to an alternate stairwell or secondary escape route.
8. Do not attempt re-entry until the all clear signal is given by the Fire Department.



LAUREL PARK PLACE OFFICE COMPLEX
Laurel Park Dr. N. Livonia, MI
4th Floor East

LAUREL PARK

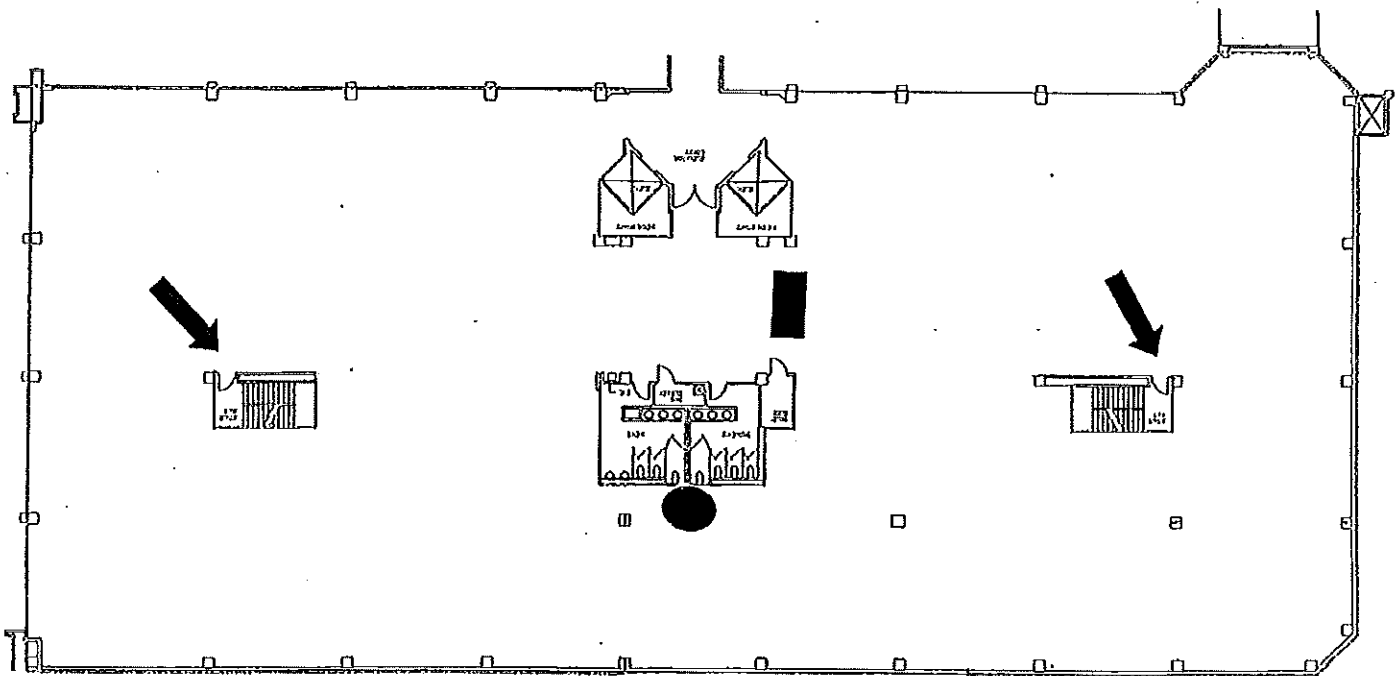
TO ALERT THE BUILDING OF A FIRE

1. Call the Fire Dept. at 911 and Security at 734-953-1077.
2. Attempt to extinguish the fire, if minor.
3. Isolate the fire by closing the doors in the fire area.
4. Assist people in the immediate fire area to safety.
5. Evacuate by leading people calmly & quickly through the nearest stairwell or pre-planned escape route.
6. **DO NOT** use elevators.
7. If the pre-planned escape route is full of smoke, direct people to an alternate stairwell or secondary escape route.
8. Do not attempt re-entry until the all clear signal is given by the Fire Department.

STAIRWELL →

FIRE EXTINGUISHERS ●

PULL STATIONS ■



LAUREL PARK PLACE OFFICE COMPLEX
Laurel Park Dr. N. Ivonla, MI
CENTER TOWER – FLOORS 2 - 4

LAUREL PARK

TO ALERT THE BUILDING OF A FIRE

STAIRWELLS



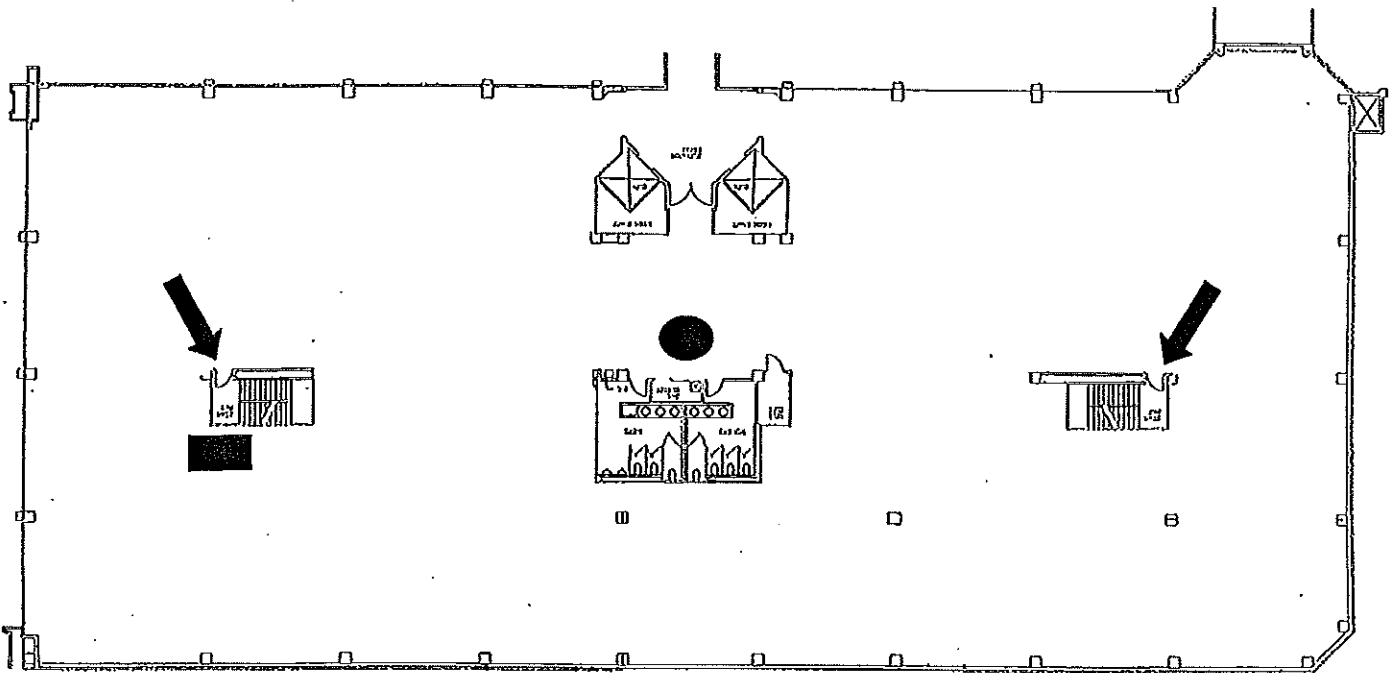
FIRE EXTINGUISHERS



PULL STATIONS



1. Call the Fire Dept. at 911 and Security at 734-953-1077.
2. Attempt to extinguish the fire, if minor.
3. Isolate the fire by closing the doors in the fire area.
4. Assist people in the immediate fire area to safety.
5. Evacuate by leading people calmly & quickly through the nearest stairwell or pre-planned escape route.
6. **DO NOT** use elevators.
7. If the pre-planned escape route is full of smoke, direct people to an alternate stairwell or secondary escape route.
8. Do not attempt re-entry until the all clear signal is given by the Fire Department.



LAUREL PARK PLACE OFFICE COMPLEX

Laurel Park Dr. N.

Livonia, MI

WEST TOWER - FLOORS 2 & 3

LAUREL PARK

TO ALERT THE BUILDING OF A FIRE

1. Call the Fire Dept. at 911 and Security at 734-953-1077.
2. Attempt to extinguish the fire, if minor.
3. Isolate the fire by closing the doors in the fire area.
4. Assist people in the immediate fire area to safety.
5. Evacuate by leading people calmly & quickly through the nearest stairwell or pre-planned escape route.
6. DO NOT use elevators.
7. If the pre-planned escape route is full of smoke, direct people to an alternate stairwell or secondary escape route.
8. Do not attempt re-entry until the all clear signal is given by the Fire Department.

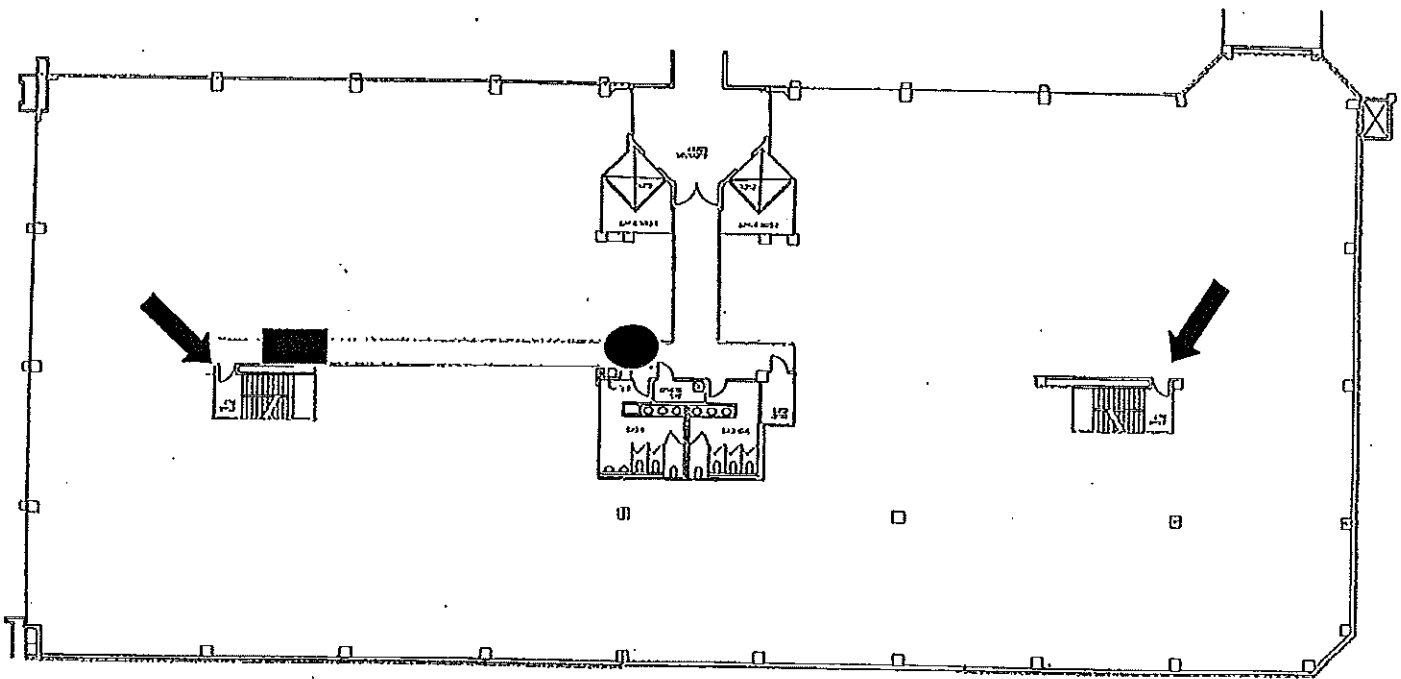
STAIRWELL



FIRE EXTINGUISHERS



PULL STATIONS



LAUREL PARK PLACE OFFICE COMPLEX

Laurel Park Dr. N.

4th Floor West

Livonia, MI

EVACUATION TENANT MEETING LOCATIONS

KEY	
AAA	- AAA
AMP	- Alterations by Mary & Paul
AD	- Advanced Discovery
Bosch	- Bosch Automotive
LMCU	- Lake Michigan Credit Union
MAIPF	- MAIPF
MCCA	- Michigan Catastrophic
MIKE	- Mike Cox Law Firm
PY	- Phoenix Theatre
RAND	- Randstad
RC	- Record Copy
SB	- Schostak Brothers
TSFR	- Team Schostak
STEEL	- Steel Technology
SH	- Sweet Hour
SMP	- Success Mortgage Partners
TC	- Tower Center
TE	- Tower East
TW	- Tower West
VCA	- VCA North America
WUX	- Wu Xing

