



For Lease Mack Office Building



19251 Mack Avenue
Grosse Pointe Woods, Michigan

AJ Weiner
Managing Director
248.581.3335
aj.weiner@jll.com

Ben Schrode
Associate
248.581.3325
ben.schrode@jll.com





For Lease Mack Office Building

Property Description

The Mack Office Building located in Grosse Pointe Woods is a full service office building offering large and small suite availability to medical and office tenants. The building's amenities, free covered parking, and close proximity to I-94 and Mack Avenue's commercial district provides tenants a rare opportunity in the Grosse Pointe market. To arrange a private tour of the property please contact Ben Schrode, Associate (ben.schrode@jll.com), of JLL.

Suite Availability

Suite	s.f.	Suite	s.f.
90	1,224	440-470	8,333
130	1,351	500	10,345
180	1,308		
230	1,209		
380	1,397		

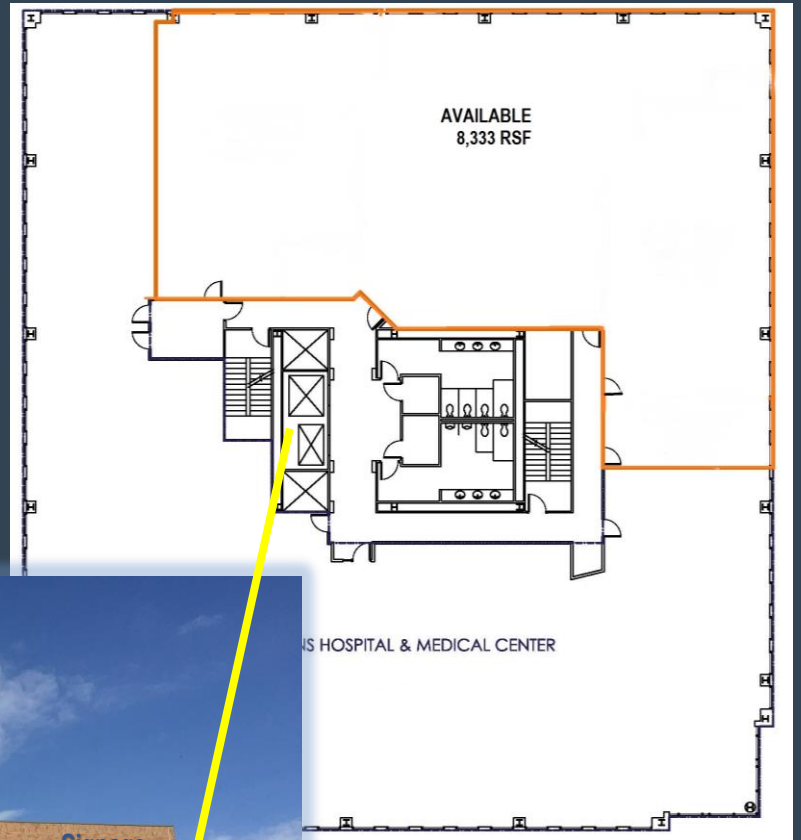
Property Details and Highlights

- Address: 19251 Mack Avenue, Grosse Pointe Woods, MI.
- Max Contiguous s.f.: 10,345
- Building Class: A
- Year Built: 1989
- Number of Floors: 5
- Parking: Free four level parking deck with 600 spaces; reserved parking available
- Adjacent to Pointe Plaza retail center consisting of restaurants, ATM, and LA Fitness
- Rare Grosse Pointe availability
- Energy Star Certified
- Medical and dental suites
- 24 Hr. Security
- On-Site Day Care Facility
- Possible Building Signage
- On-Site Property Management
- Managed by Schostak Brothers
- Close proximity to St. John Hospital



4th Floor – 8,333 r.s.f.

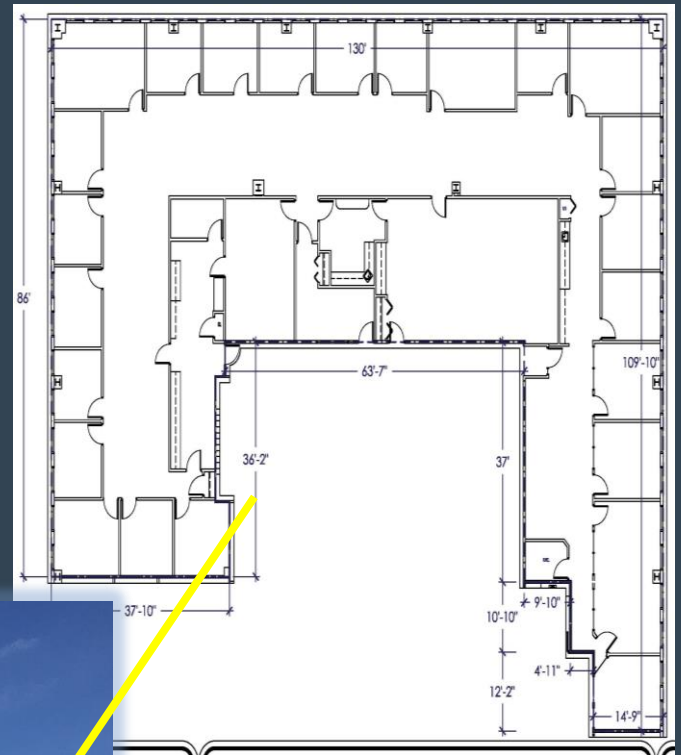
The 4th floor of the Mack Office Building has four contiguous suites along the window line of Mack Avenue available for lease totaling 8,333 rentable square feet for large office tenants.





5th Floor – 10,345 r.s.f.

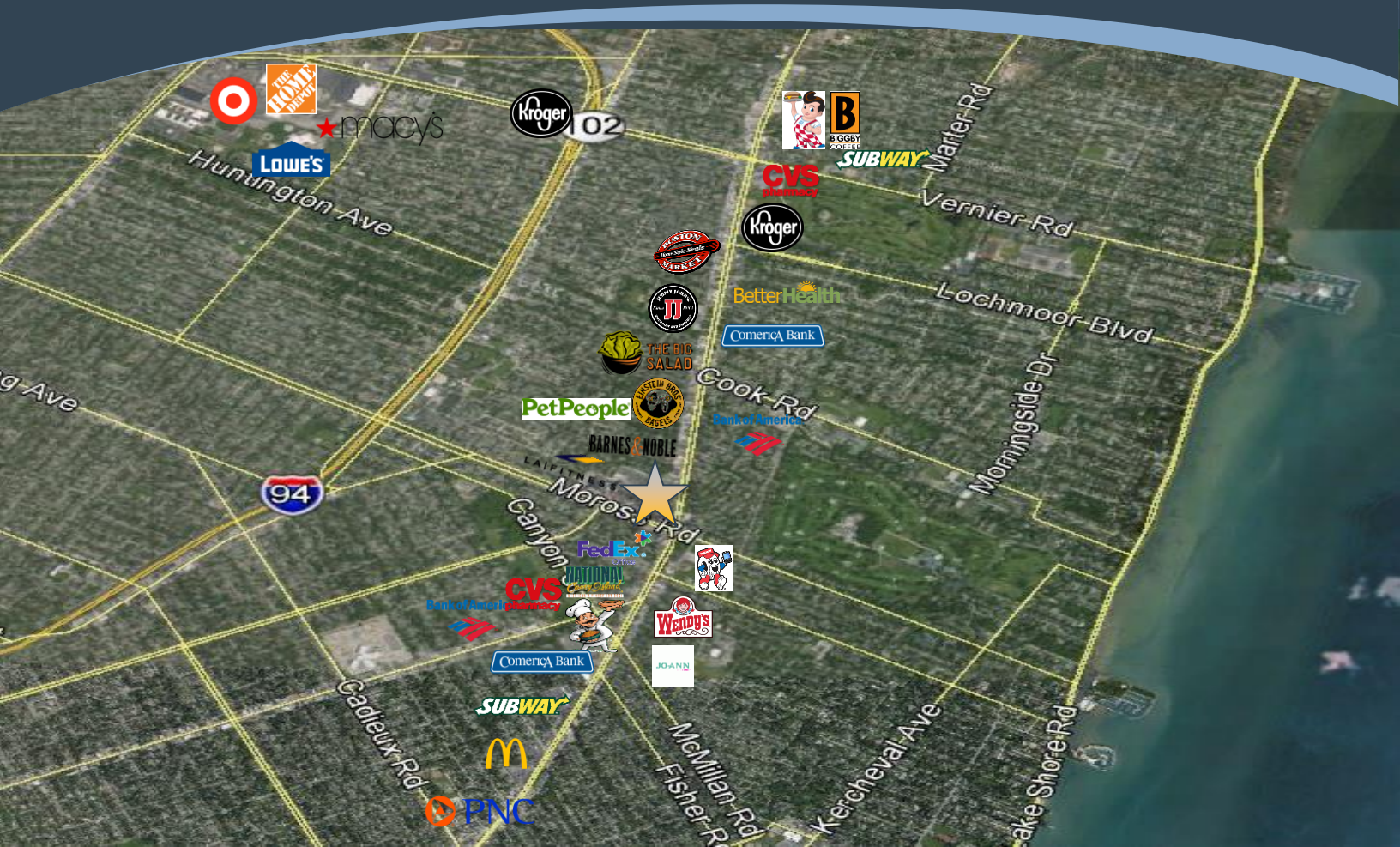
The 5th floor of the Mack Office Building offers 10,345 rentable square feet directly off the elevator and along the window line of Mack Avenue with views of Grosse Pointe.





For Lease Mack Office Building

Area Overview



AJ Weiner
Managing Director
248.581.3335
aj.weiner@jll.com

Ben Schrode
Associate
248.581.3325
ben.schrode@jll.com

