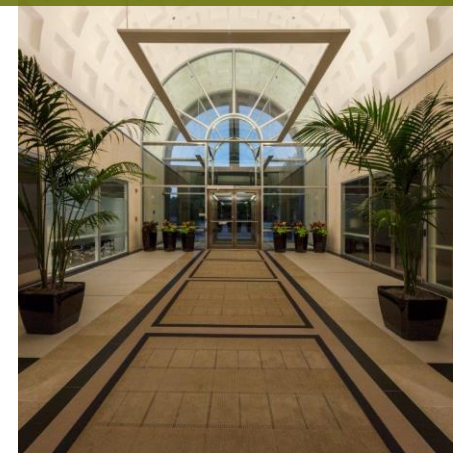


25800 Northwestern Highway Southfield, Michigan



Beautifully Renovated * Centrally Located * Numerous Amenities



Daniel Canvasser 248.350.8141 dcanvasser@ngkf.com

Mike Valant 248.357.6568 mvalant@ngkf.com

**Newmark Grubb
Knight Frank**

FOR LEASE



Newmark Grubb Knight Frank | 27725 Stansbury Blvd., Suite 300 | Farmington Hills, MI 48334

Procuring broker shall only be entitled to a commission calculated in accordance with the rates approved by our principal only if such procuring broker executes a brokerage agreement acceptable to us and our principal and the conditions as set forth in the brokerage agreement are fully and unconditionally satisfied. Although all information furnished regarding property for sale, rental, or financing is from sources deemed reliable, such information has not been verified and no express representation is made nor is any to be implied as to the accuracy thereof and it is submitted subject to errors, omissions, change of price, rental or other conditions, prior sale, lease or financing, or withdrawal without notice and to any special conditions imposed by our principal.



25800 Northwestern Highway Southfield, Michigan

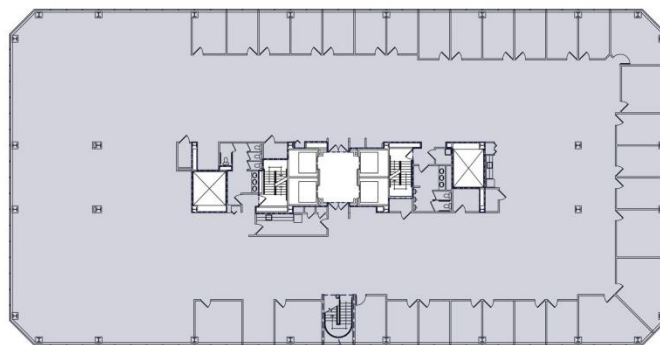
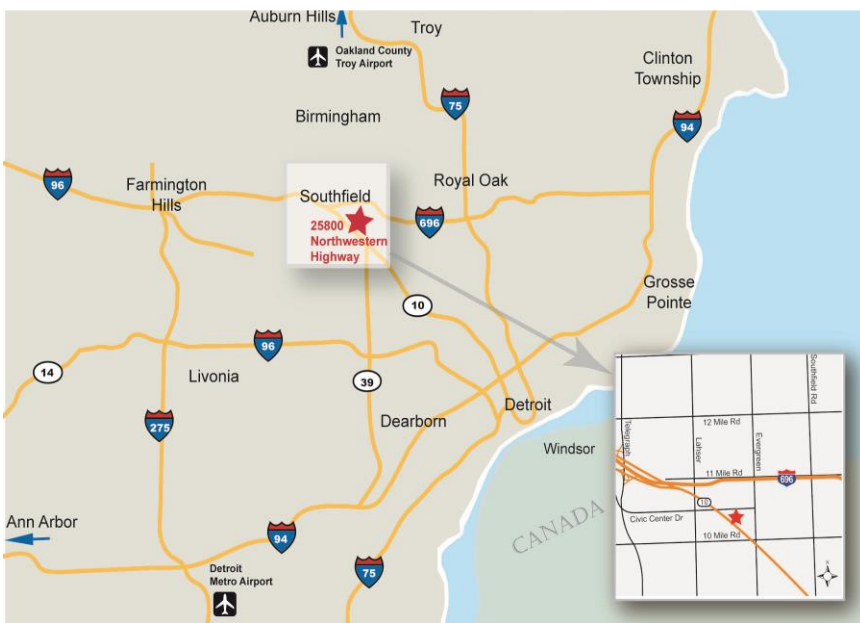
Features

- ◆ 2,296 – 44,208 SF Available
- ◆ Newly Renovated Common Areas
- ◆ Prime Location! (easy access to freeways)
- ◆ Full Service Building (*cafeteria, sundry shop, onsite security and property manager, conference area, free covered parking*)
- ◆ Contiguous Full Floors Available with Internal Staircase
- ◆ Signage Available
- ◆ Magnificently Landscaped Courtyard
- ◆ Motivated Landlord
- ◆ Award Winning Management

Location

Awards

Floor Plan



Daniel Canvasser 248.350.8141 dcanvasser@ngkf.com

Mike Valant 248.357.6568 mvalant@ngkf.com

**Newmark Grubb
Knight Frank**



Newmark Grubb Knight Frank | 27725 Stansbury Blvd., Suite 300 | Farmington Hills, MI 48334

Procuring broker shall only be entitled to a commission calculated in accordance with the rates approved by our principal only if such procuring broker executes a brokerage agreement acceptable to us and our principal and the conditions as set forth in the brokerage agreement are fully and unconditionally satisfied. Although all information furnished regarding property for sale, rental, or financing is from sources deemed reliable, such information has not been verified and no express representation is made nor is any to be implied as to the accuracy thereof and it is submitted subject to errors, omissions, change of price, rental or other conditions, prior sale, lease or financing, or withdrawal without notice and to any special conditions imposed by our principal.