

The Landings

Tamiami Trail & Proctor Road ~ Sarasota, Florida 34231



The Landings is located on U.S. 41 (Tamiami Trail) at the intersection of Proctor Road in Sarasota, Florida.

The Landings is a well maintained shopping center with high visibility from U.S 41 and easy access to I-75 and other major freeways and thoroughfares. There is ample parking, tremendous foot traffic and convenient to surrounding upscale residential neighborhoods.

Join Publix, Office Depot, Petsmart, and many others at this thriving center.

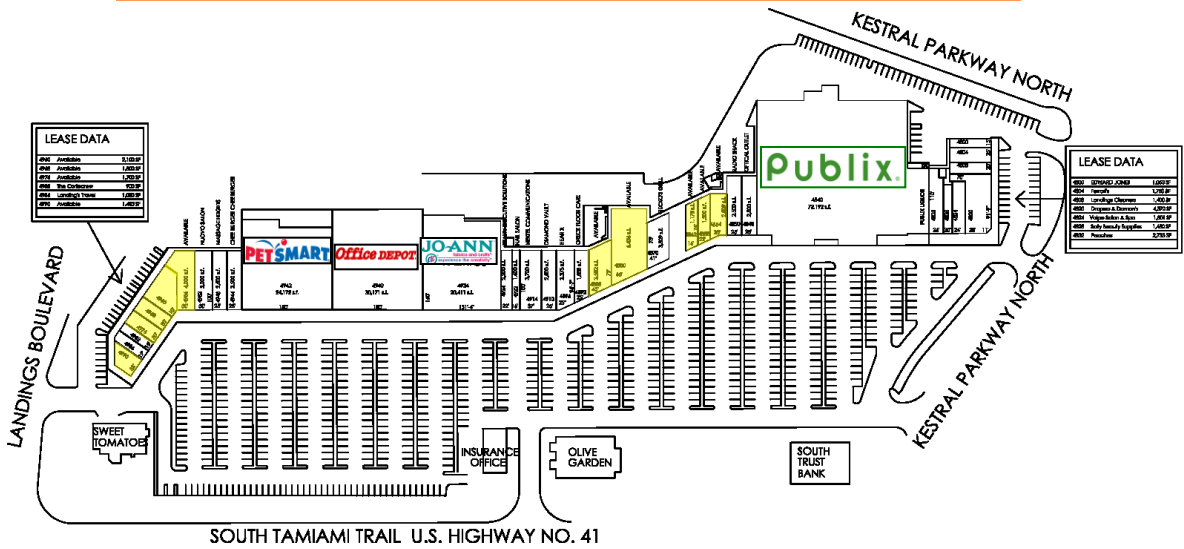
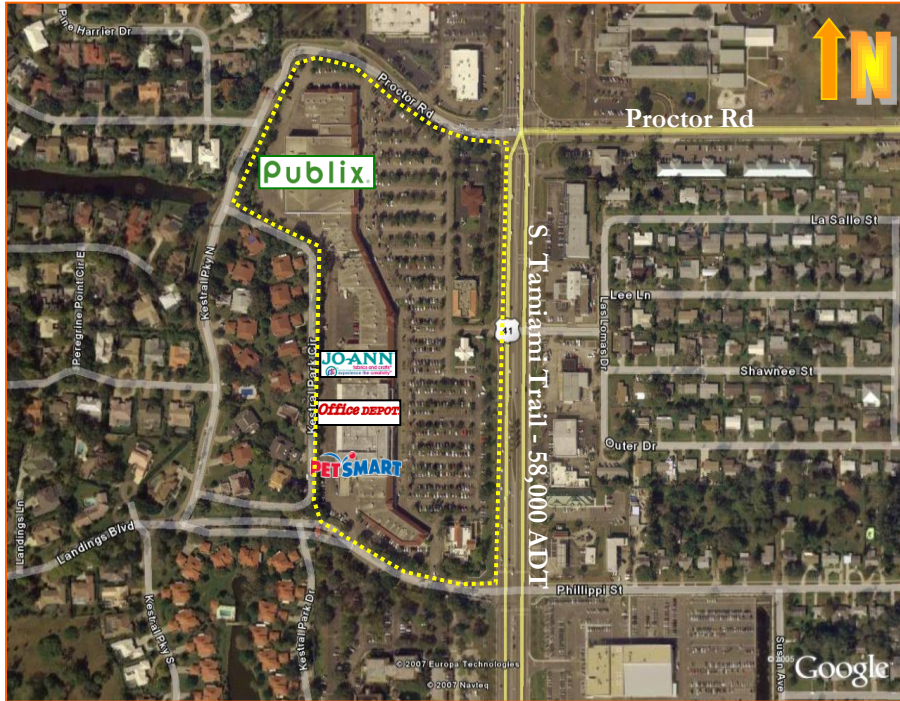


Property Features:	
Built	1988/2005
Total Center GLA	148,348 SF
Major Retailers	
Publix	72,192 SF
Office Depot	30,171 SF
Petsmart	24,172 SF
Demographic Facts:	
2010 Population	
3 Mile	57,667
5 Mile	134,496
2010 Median HH Income	
3 Mile	\$54,185
5 Mile	\$51,721
Traffic Counts:	
Tamiami Trail	56,534 ADT



The Landings

Tamiami Trail & Proctor Road ~ Sarasota, Florida 34231



TENANT ROSTER

- 4990 Fannie May - 1,483 SF – Coming Soon
- 4986 Landing's Travel - 1,080 SF
- 4982 The Corkscrew - 900 SF
- 4976 Available - 1,700 SF
- 4968 Available - 1,800 SF
- 4960 Available - 2,100 SF
- 4956 Available - 4,000 SF
- 4952 Nuovo Salon - 3,000 SF
- 4948 Massage Heights - 2,500 SF
- 4944 Chee Burger Chee Burger - 2,500 SF
- 4942 Petsmart - 24,172 SF
- 4940 Office Depot - 30,171 SF

- 4934 Jo-Ann Fabrics - 20,411 SF
- 4924 Realty Executive Solutions - 2,200 SF
- 4922 Nail Salon - 1,600 SF
- 4914 Nextel Communications - 3,700 SF
- 4910 Diamond Vault - 2,500 SF
- 4896 Hear X - 2,375 SF
- 4982 Oreck Floor Care - 1,558 SF
- 4880 Dollar Tree – 3,582 SF – Coming Soon**
- 4870 Gecko's Grill - 3,509 SF
- 4862 China King - 1,178 SF
- 4858 Available - 1,500 SF

- 4854 Available - 2,809 SF
- 4850 Radio Shack - 2,500 SF
- 4848 Optical Outlet - 2,500 SF
- 4840 Publix - 72,192 SF
- 4832 Peaches - 2,733 SF
- 4828 Sally Beauty Supplies - 1,480 SF
- 4824 Volpe Salon & Spa - 1,801 SF
- 4820 Drapers & Damon's - 4,370 SF
- 4808 Landings Cleaners - 1,400 SF
- 4804 Ferrari's - 1,750 SF
- 4800 Edward Jones - 1,050 SF

For Additional Information Please Contact:

Justine Ross
 Senior Leasing Representative
 Office 248.357.6220 Cell 734.626.2626
Ross@schostak.com