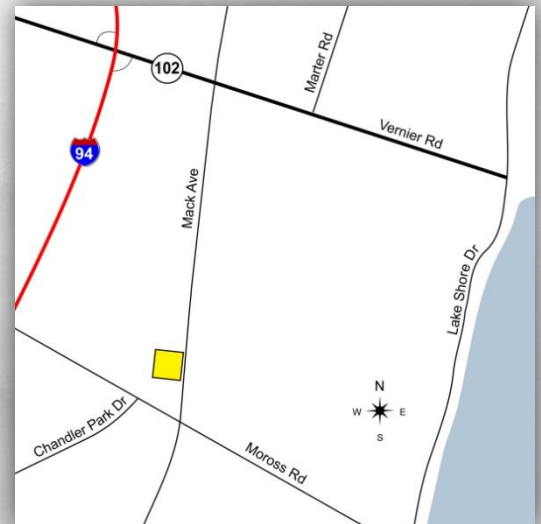


1,209 - 9,909 SF Available For Lease



Pointe Plaza Office Building 19251 Mack Avenue - Grosse Pointe Woods

- Premier office space in Grosse Pointe Woods
- Several ready to occupy suites
- 24-hour security service
- Covered parking
- Full service – shops, food, banking in complex
- Immediate access to St. John's Hospital



For More Information, Call:

John Fricke

jfricke@signatureassociates.com

Jeffrey Trepeck

jtrepeck@signatureassociates.com

248.948.9000



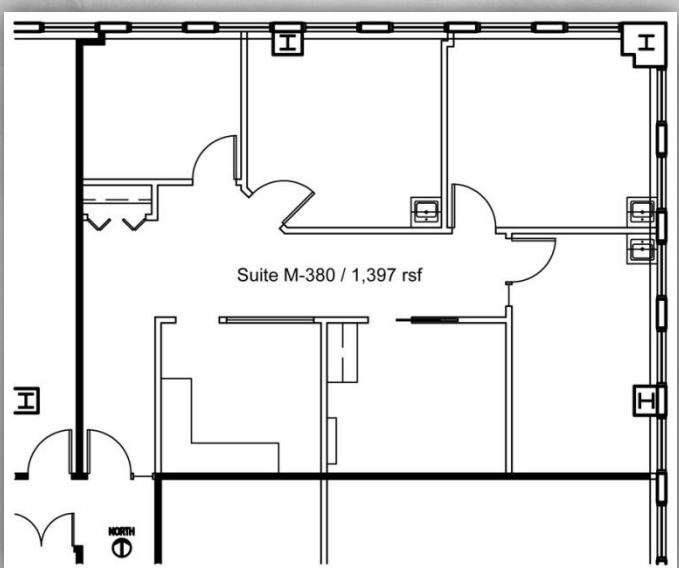
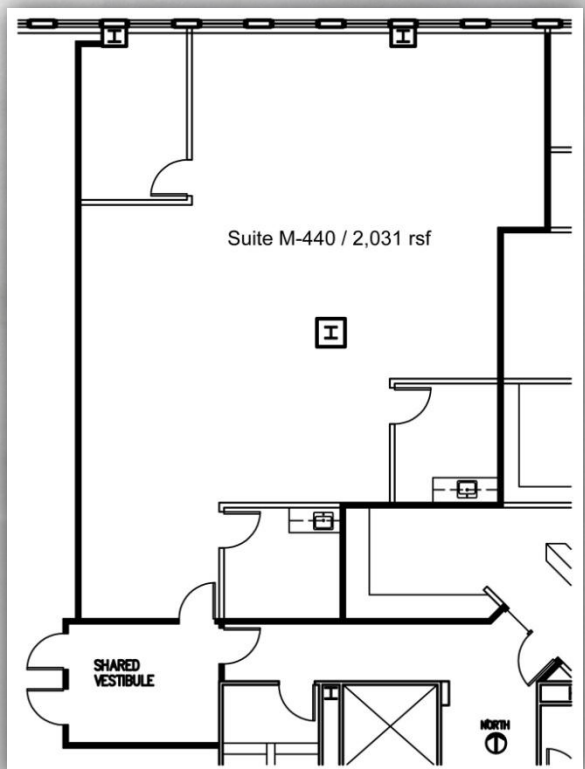
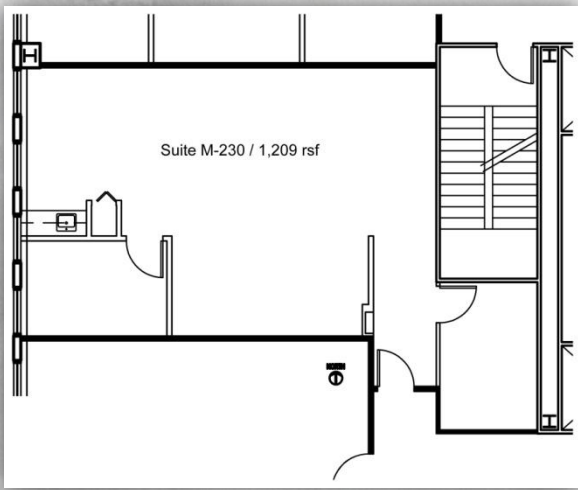
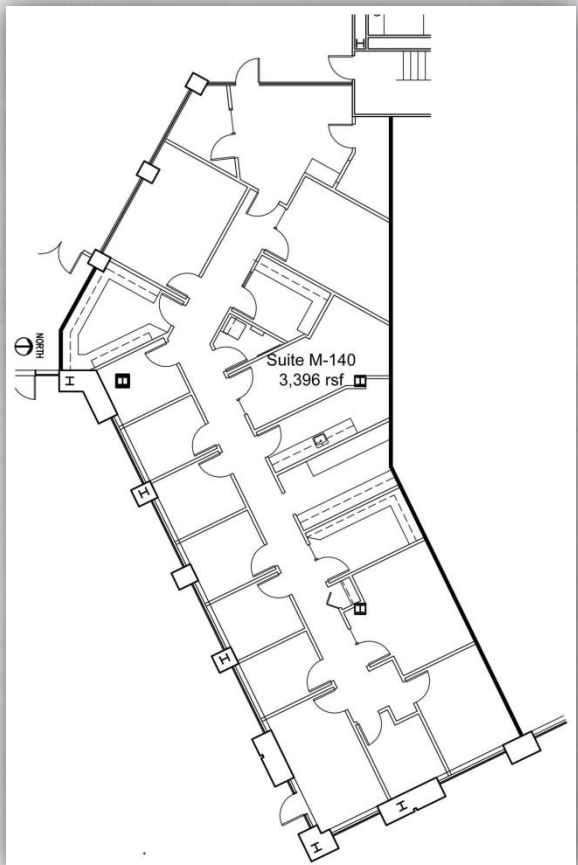
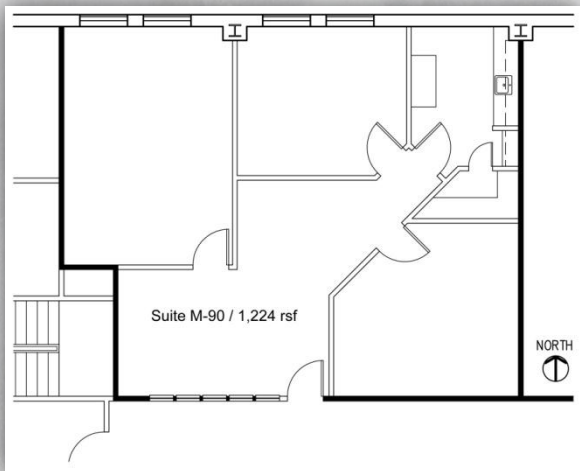
SIGNATURE ASSOCIATES
THE TEAM No Signature. No Results.



An independently owned and operated member of the
CUSHMAN & WAKEFIELD
ALLIANCE

One Towne Square, Suite 1200 Southfield, Michigan 48076
www.signatureassociates.com

Pointe Plaza Office Building 19251 Mack Avenue - Grosse Pointe Woods



Pointe Plaza Office Building 19251 Mack Avenue - Grosse Pointe Woods

