

Retail For Lease

Pointe Plaza Shopping Center

Mack Ave & Moross Road ~ Grosse Pointe Woods, MI



Up to 6,000 SF Available

Join Rite Aid, Blockbuster Video, Barnes & Noble, Buddy's Pizza, Claire's Boutique and many more.

Demographic Facts:

	<u>3 Mile</u>	<u>5 Mile</u>
2009 Population	133,487	289,284
2009 Est. Median HH Income	\$65,410	\$54,097

Schostak
BROTHERS & COMPANY

www.schostak.com

17800 Laurel Park Drive, Suite 200C

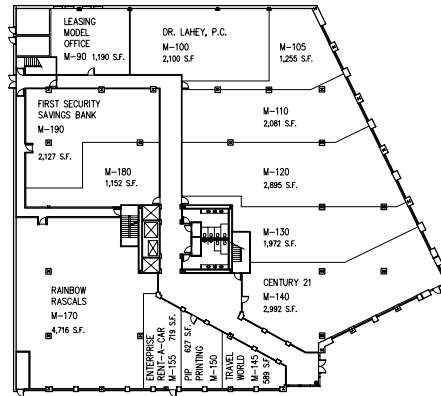
Livonia, Michigan 48152

(248) 262-1000

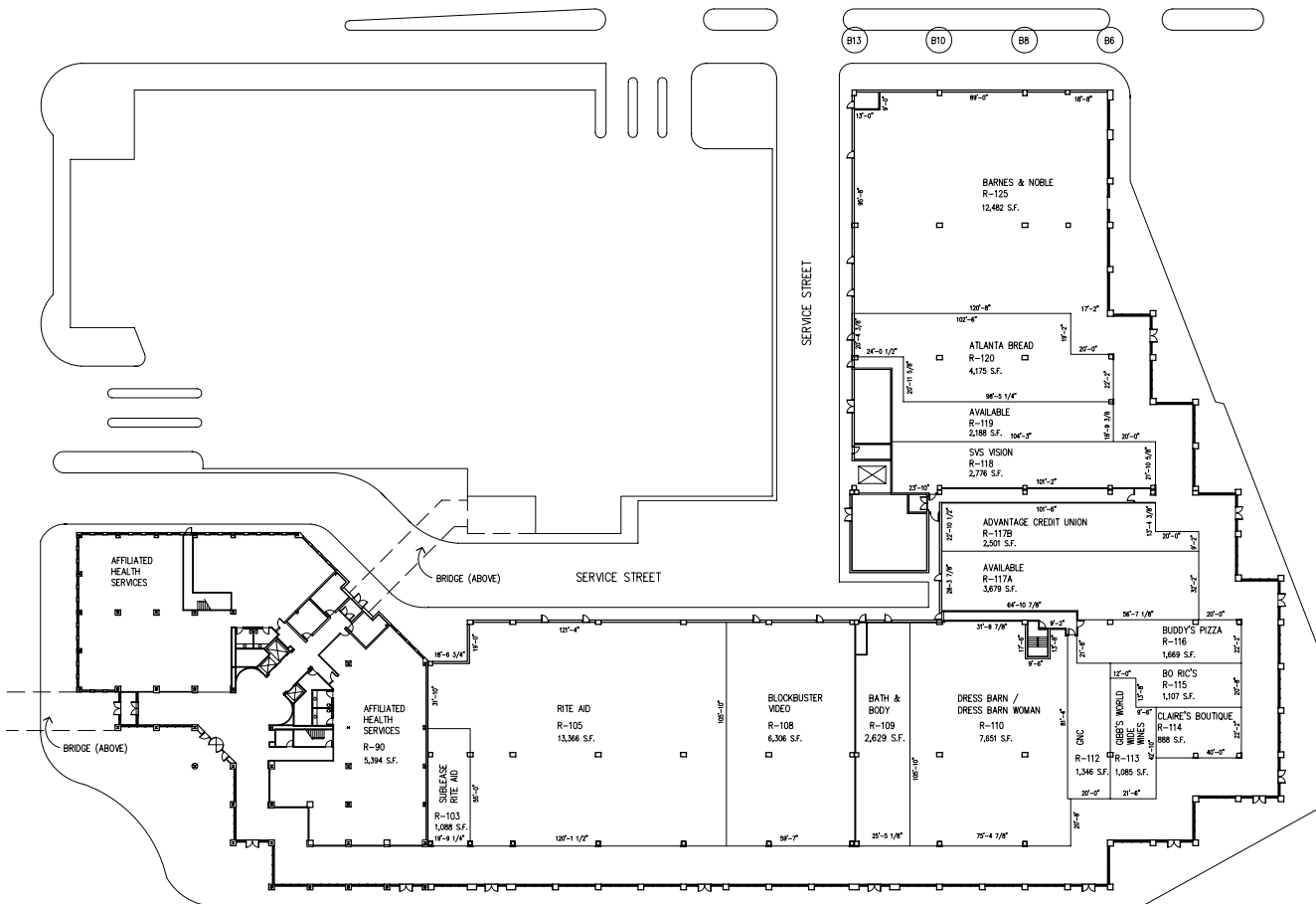
For More Information Contact:

Rick Reardon

(248) 357-6142



VICINITY MAP



SCALE: NONE

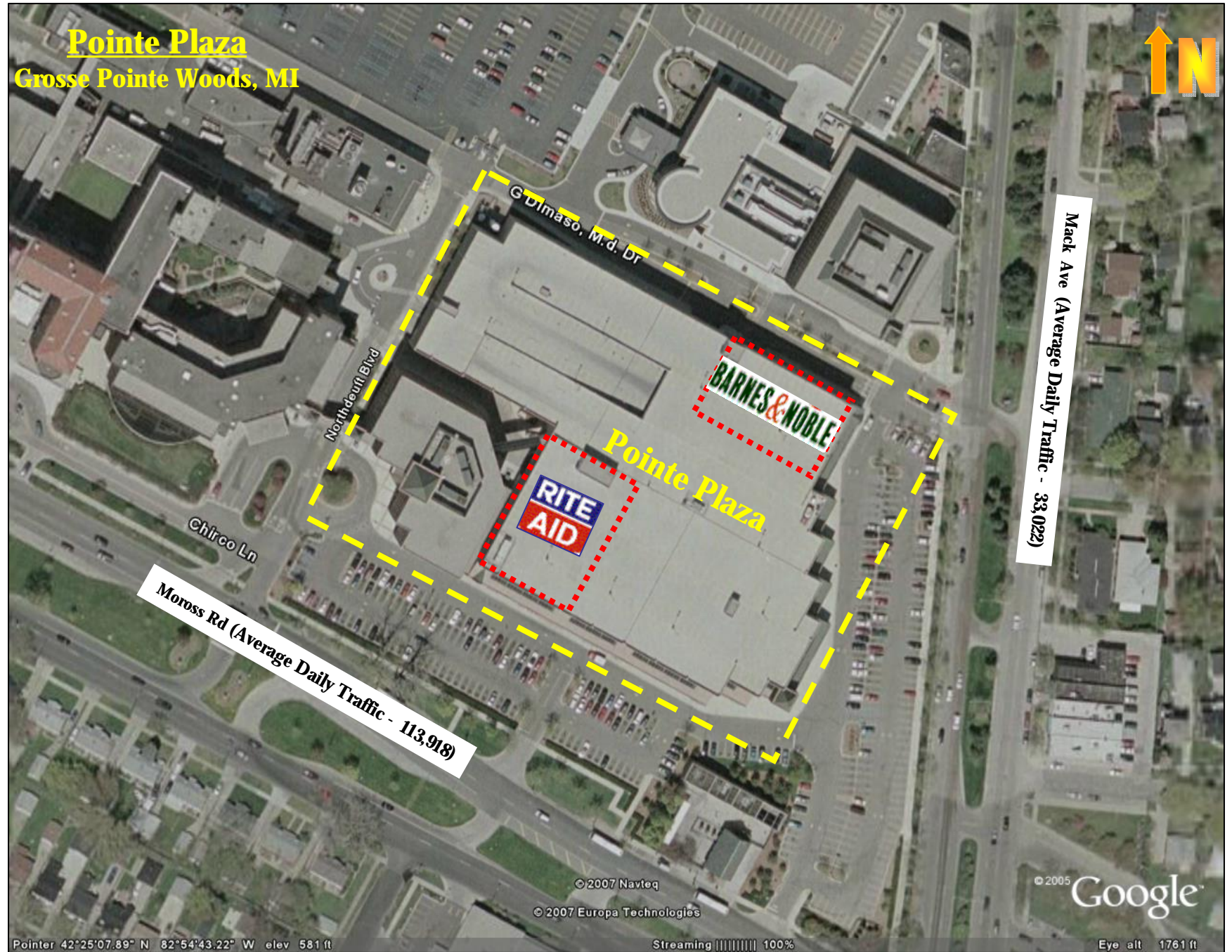
PROJECT	POINTE PLAZA GROSSE POINTE, MICHIGAN		
REVISIONS	DRAWING TITLE		
	LEASE PLAN		
	DATE	DRAWN BY	DRAWING #
	1/5/10	APPROVED BY	SL-1

Schostak
BROTHERS & COMPANY
17800 LAUREL PARK DRIVE NORTH #200C (248)262-1000 LIVONIA, MICHIGAN 48152





Pointe Plaza
Grosse Pointe Woods, MI



Moross Rd (Average Daily Traffic - 113,918)

Mack Ave (Average Daily Traffic - 33,022)

RITE AID

BARNES & NOBLE

Pointe Plaza

© 2007 Navteq

© 2007 Europa Technologies

© 2005 Google

Pointer 42°25'07.89" N 82°54'43.22" W elev 581 ft

Streaming ||||| 100%

Eye alt 1761 ft



Date: 05/05/10

Current Geography Selection: (3 Selected) 1,3,5 mile radii: MACK AVE & MOROSS RD, DETROIT, MI 48236

Your title for this geography: Pointe Plaza

Lat: 42.416890 **Long:** -82.910540

City: Grosse Pointe Farms **Pop:** 9,730

County: Wayne County **Pop:** 2,005,415

Zip: 48236 **Pop:** 30,848

Demographic Snapshot Comparison Report

	1 Miles:	3 Miles:	5 Miles:
Population: 2009			
Total Population	15,158	133,487	289,284
Male Population	47.3%	47.2%	47.4%
Female Population	52.7%	52.8%	52.6%
Median Age	41.2	37.8	36.4
Population Density (per sq. mi.)	4,824.8	4,721.1	3,683.3
Employees	10,705	37,900	75,752
Establishments	719	3,869	7,873
Income: 2009			
Median HH Income	\$75,161	\$65,410	\$54,097
Per Capita Income	\$31,446	\$26,964	\$21,318
Average HH Income	\$85,427	\$79,539	\$62,570
Households: 2009			
Total Households	5,605	45,012	97,392
Average Household Size	2.68	2.95	2.94
Household Growth 1990 - 2000	-1.8%	-2.7%	-5.9%
Housing: 2009			
Owner Occupied Housing Units	71.8%	67.0%	62.1%
Renter Occupied Housing Units	11.7%	16.4%	21.8%
Vacant Housing Units	16.5%	16.6%	16.2%
Race: 2009			
White	76.8%	55.1%	48.9%
Black	19.3%	41.2%	46.7%
American Indian, Eskimo, Aleut	0.1%	0.1%	0.1%
Asian	2.4%	1.9%	2.3%
Hawaiian or Pacific Islander	0.1%	0.0%	0.0%

Other	0.3%	0.3%	0.3%
Multirace	1.2%	1.4%	1.6%
Ethnicity: 2009			
Hispanic	2.1%	2.0%	1.8%
Non-Hispanic	97.9%	98.0%	98.2%

Current year data is for the year **2009**, 5 year projected data is for the year **2014**. More About Our Data.
Demographic data © 2009 by Experian/Applied Geographic Solutions.

© **2010. DemographicsNow is brought to you by Alteryx, LLC.**

Alteryx, DemographicsNow.com and the Alteryx and DemographicsNow.com logos are trademarks of Alteryx, LLC.
All rights reserved.

[Privacy Statement](#) | [License Agreement](#)