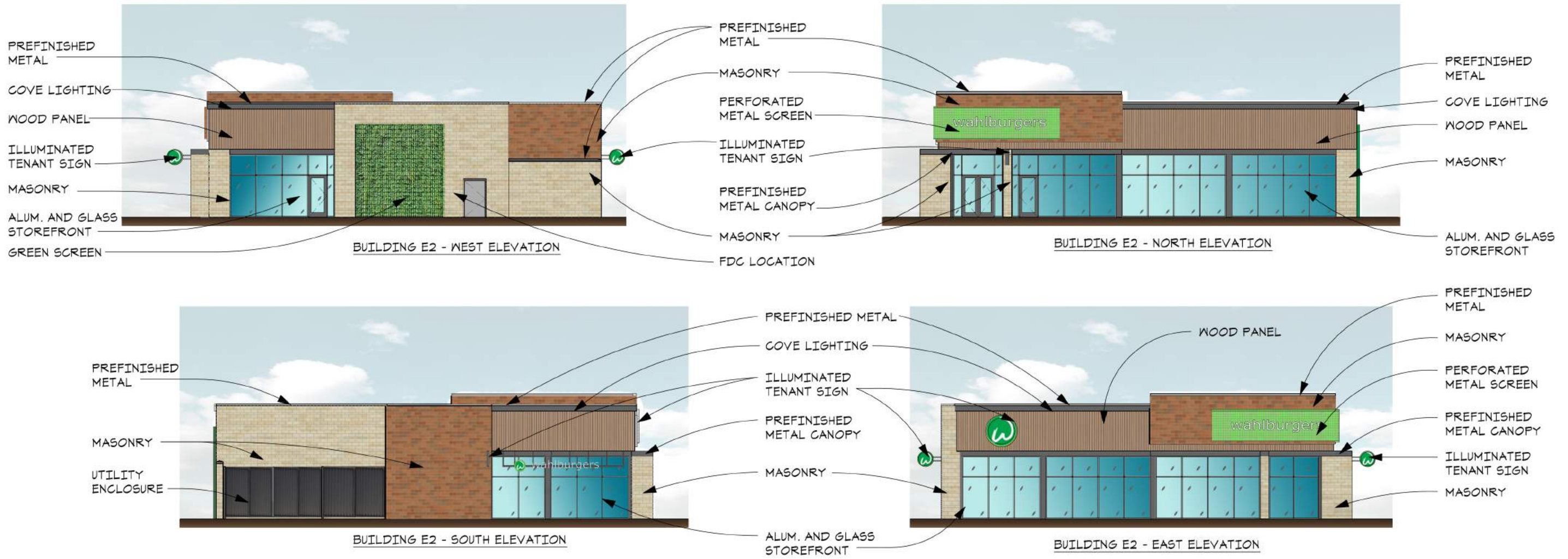


- LEASE ELEVATION GENERAL NOTES:**
1. TENANT DEMISING BASED ON 5/19/2017 SITE LEASE PLAN AND BUILDING LEASE PLANS.
 2. TENANT SIGN DESIGN TO BE REVIEWED AND APPROVED BY OWNER AND BE IN COMPLIANCE WITH SITE SIGN PACKAGE AND SHOPPING CENTER MARKETING STRATEGY.
 3. FINAL TENANT SIGN LOCATIONS TO BE COORDINATED BETWEEN TENANT AND OWNER. LOCATIONS SHOWN PER CITY APPROVAL. FINAL LOCATIONS MAY VARY.
 4. BUILDING SIGNAGE TO BE ISSUED UNDER A SEPARATE PERMIT.
 5. EACH TENANT IS ALLOWED ONE SIGN PER FACADE, MAXIMUM OF TWO SIGNS. SIGN AREA NOT TO EXCEED 10% OF FACADE AND OTHER SIGN CRITERIA OF LEASE IN ACCORDANCE WITH CITY APPROVAL.
 6. DOOR LOCATIONS ARE SHOWN FOR REFERENCE. FINAL DOOR LOCATIONS TO COORDINATE WITH FINAL LEASING PLAN.

NORTHWOOD REDEVELOPMENT	16-648
WOODWARD AND 13 MILE ROYAL OAK, MI	07/26/17



© 2016 Hobbs + Black Associates, Inc.