



Demographic and Income Comparison Profile

48073, Royal Oak, Michigan
Ring Bands: 0-1, 1-3, 3-5 mile radii

Prepared by Esri
Latitude: 42.52806
Longitude: -83.17006

	0 - 1 mile	1 - 3 mile	3 - 5 mile
Census 2010 Summary			
Population	13,990	103,188	174,291
Households	7,213	46,642	71,225
Families	3,326	25,905	45,949
Average Household Size	1.93	2.20	2.43
Owner Occupied Housing Units	4,671	31,276	52,566
Renter Occupied Housing Units	2,542	15,366	18,659
Median Age	39.2	38.5	40.9
2017 Summary			
Population	14,649	107,403	180,498
Households	7,585	48,459	74,042
Families	3,406	26,371	46,999
Average Household Size	1.93	2.20	2.42
Owner Occupied Housing Units	4,719	31,650	53,494
Renter Occupied Housing Units	2,866	16,810	20,548
Median Age	40.9	40.1	42.7
Median Household Income	\$55,583	\$70,936	\$68,628
Average Household Income	\$73,795	\$96,708	\$101,910
2022 Summary			
Population	15,172	110,208	185,132
Households	7,865	49,737	76,064
Families	3,489	26,820	47,942
Average Household Size	1.92	2.20	2.42
Owner Occupied Housing Units	4,882	32,440	54,850
Renter Occupied Housing Units	2,983	17,297	21,214
Median Age	42.4	41.0	43.7
Median Household Income	\$61,603	\$79,466	\$76,456
Average Household Income	\$84,247	\$109,416	\$112,182
Trends: 2017-2022 Annual Rate			
Population	0.70%	0.52%	0.51%
Households	0.73%	0.52%	0.54%
Families	0.48%	0.34%	0.40%
Owner Households	0.68%	0.49%	0.50%
Median Household Income	2.08%	2.30%	2.18%

Source: U.S. Census Bureau, Census 2010 Summary File 1. Esri forecasts for 2017 and 2022.



Demographic and Income Comparison Profile

48073, Royal Oak, Michigan
 Ring Bands: 0-1, 1-3, 3-5 mile radii

Prepared by Esri
 Latitude: 42.52806
 Longitude: -83.17006

2017 Households by Income	0 - 1 mile		1 - 3 mile		3 - 5 mile	
	Number	Percent	Number	Percent	Number	Percent
<\$15,000	766	10.1%	3,569	7.4%	6,681	9.0%
\$15,000 - \$24,999	626	8.3%	3,497	7.2%	5,782	7.8%
\$25,000 - \$34,999	759	10.0%	3,665	7.6%	5,983	8.1%
\$35,000 - \$49,999	1,192	15.7%	5,759	11.9%	8,613	11.6%
\$50,000 - \$74,999	1,477	19.5%	8,786	18.1%	12,353	16.7%
\$75,000 - \$99,999	978	12.9%	6,776	14.0%	9,660	13.0%
\$100,000 - \$149,999	1,055	13.9%	8,577	17.7%	11,728	15.8%
\$150,000 - \$199,999	451	5.9%	3,512	7.2%	5,529	7.5%
\$200,000+	279	3.7%	4,318	8.9%	7,710	10.4%
Median Household Income	\$55,583		\$70,936		\$68,628	
Average Household Income	\$73,795		\$96,708		\$101,910	
Per Capita Income	\$37,845		\$43,854		\$41,852	

2022 Households by Income	0 - 1 mile		1 - 3 mile		3 - 5 mile	
	Number	Percent	Number	Percent	Number	Percent
<\$15,000	756	9.6%	3,480	7.0%	6,799	8.9%
\$15,000 - \$24,999	585	7.4%	3,220	6.5%	5,516	7.3%
\$25,000 - \$34,999	687	8.7%	3,229	6.5%	5,416	7.1%
\$35,000 - \$49,999	1,098	14.0%	5,092	10.2%	7,777	10.2%
\$50,000 - \$74,999	1,440	18.3%	8,213	16.5%	11,727	15.4%
\$75,000 - \$99,999	1,067	13.6%	7,194	14.5%	10,356	13.6%
\$100,000 - \$149,999	1,314	16.7%	10,089	20.3%	13,724	18.0%
\$150,000 - \$199,999	568	7.2%	4,131	8.3%	6,320	8.3%
\$200,000+	349	4.4%	5,090	10.2%	8,429	11.1%
Median Household Income	\$61,603		\$79,466		\$76,456	
Average Household Income	\$84,247		\$109,416		\$112,182	
Per Capita Income	\$43,234		\$49,619		\$46,114	

Data Note: Income is expressed in current dollars.

Source: U.S. Census Bureau, Census 2010 Summary File 1. Esri forecasts for 2017 and 2022.



Demographic and Income Comparison Profile

48073, Royal Oak, Michigan
 Ring Bands: 0-1, 1-3, 3-5 mile radii

Prepared by Esri
 Latitude: 42.52806
 Longitude: -83.17006

2010 Population by Age	0 - 1 mile		1 - 3 mile		3 - 5 mile	
	Number	Percent	Number	Percent	Number	Percent
Age 0 - 4	704	5.0%	6,511	6.3%	9,506	5.5%
Age 5 - 9	544	3.9%	5,868	5.7%	10,544	6.0%
Age 10 - 14	555	4.0%	5,654	5.5%	11,553	6.6%
Age 15 - 19	640	4.6%	5,104	4.9%	11,162	6.4%
Age 20 - 24	957	6.8%	4,946	4.8%	8,942	5.1%
Age 25 - 34	2,779	19.9%	17,840	17.3%	21,691	12.4%
Age 35 - 44	1,843	13.2%	15,899	15.4%	23,705	13.6%
Age 45 - 54	2,116	15.1%	15,579	15.1%	27,577	15.8%
Age 55 - 64	1,721	12.3%	12,554	12.2%	23,919	13.7%
Age 65 - 74	986	7.0%	6,248	6.1%	13,143	7.5%
Age 75 - 84	755	5.4%	4,597	4.5%	8,700	5.0%
Age 85+	389	2.8%	2,388	2.3%	3,849	2.2%

2017 Population by Age	0 - 1 mile		1 - 3 mile		3 - 5 mile	
	Number	Percent	Number	Percent	Number	Percent
Age 0 - 4	685	4.7%	6,050	5.6%	8,982	5.0%
Age 5 - 9	640	4.4%	6,152	5.7%	10,166	5.6%
Age 10 - 14	597	4.1%	5,919	5.5%	11,241	6.2%
Age 15 - 19	587	4.0%	5,330	5.0%	10,442	5.8%
Age 20 - 24	804	5.5%	5,528	5.1%	9,562	5.3%
Age 25 - 34	2,615	17.8%	16,050	14.9%	22,492	12.5%
Age 35 - 44	2,191	15.0%	16,270	15.1%	22,574	12.5%
Age 45 - 54	1,897	12.9%	15,065	14.0%	25,306	14.0%
Age 55 - 64	2,015	13.8%	14,434	13.4%	26,988	15.0%
Age 65 - 74	1,426	9.7%	9,406	8.8%	18,571	10.3%
Age 75 - 84	758	5.2%	4,524	4.2%	9,454	5.2%
Age 85+	435	3.0%	2,675	2.5%	4,721	2.6%

2022 Population by Age	0 - 1 mile		1 - 3 mile		3 - 5 mile	
	Number	Percent	Number	Percent	Number	Percent
Age 0 - 4	706	4.7%	6,097	5.5%	9,031	4.9%
Age 5 - 9	646	4.3%	6,031	5.5%	9,866	5.3%
Age 10 - 14	666	4.4%	6,105	5.5%	11,037	6.0%
Age 15 - 19	626	4.1%	5,457	5.0%	10,407	5.6%
Age 20 - 24	756	5.0%	5,399	4.9%	8,785	4.7%
Age 25 - 34	2,368	15.6%	16,334	14.8%	22,924	12.4%
Age 35 - 44	2,440	16.1%	16,262	14.8%	23,547	12.7%
Age 45 - 54	1,883	12.4%	14,719	13.4%	24,045	13.0%
Age 55 - 64	2,023	13.3%	14,337	13.0%	26,765	14.5%
Age 65 - 74	1,684	11.1%	11,389	10.3%	22,144	12.0%
Age 75 - 84	947	6.2%	5,572	5.1%	11,655	6.3%
Age 85+	427	2.8%	2,507	2.3%	4,926	2.7%

Source: U.S. Census Bureau, Census 2010 Summary File 1. Esri forecasts for 2017 and 2022.



Demographic and Income Comparison Profile

48073, Royal Oak, Michigan
 Ring Bands: 0-1, 1-3, 3-5 mile radii

Prepared by Esri
 Latitude: 42.52806
 Longitude: -83.17006

2010 Race and Ethnicity	0 - 1 mile		1 - 3 mile		3 - 5 mile	
	Number	Percent	Number	Percent	Number	Percent
White Alone	12,464	89.1%	86,973	84.3%	121,404	69.7%
Black Alone	688	4.9%	6,752	6.5%	36,830	21.1%
American Indian Alone	41	0.3%	275	0.3%	376	0.2%
Asian Alone	451	3.2%	6,497	6.3%	10,917	6.3%
Pacific Islander Alone	2	0.0%	45	0.0%	30	0.0%
Some Other Race Alone	72	0.5%	593	0.6%	753	0.4%
Two or More Races	272	1.9%	2,053	2.0%	3,981	2.3%
Hispanic Origin (Any Race)	340	2.4%	2,360	2.3%	3,221	1.8%

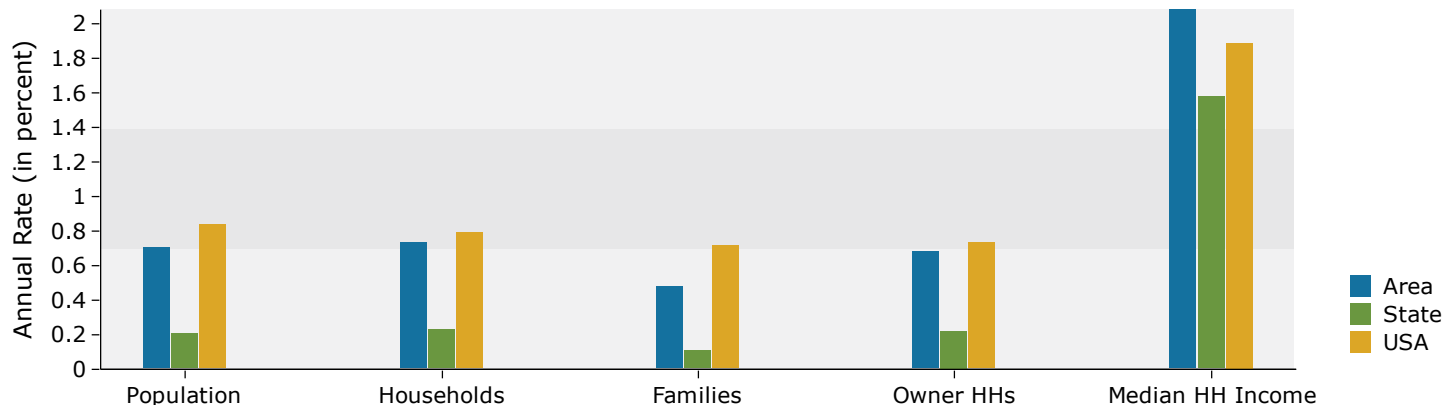
2017 Race and Ethnicity	0 - 1 mile		1 - 3 mile		3 - 5 mile	
	Number	Percent	Number	Percent	Number	Percent
White Alone	12,687	86.6%	87,441	81.4%	119,299	66.1%
Black Alone	850	5.8%	7,842	7.3%	40,676	22.5%
American Indian Alone	44	0.3%	284	0.3%	383	0.2%
Asian Alone	626	4.3%	8,511	7.9%	14,434	8.0%
Pacific Islander Alone	2	0.0%	67	0.1%	44	0.0%
Some Other Race Alone	90	0.6%	701	0.7%	866	0.5%
Two or More Races	350	2.4%	2,557	2.4%	4,797	2.7%
Hispanic Origin (Any Race)	441	3.0%	2,942	2.7%	3,905	2.2%

2022 Race and Ethnicity	0 - 1 mile		1 - 3 mile		3 - 5 mile	
	Number	Percent	Number	Percent	Number	Percent
White Alone	12,820	84.5%	87,268	79.2%	116,984	63.2%
Black Alone	1,007	6.6%	8,837	8.0%	44,096	23.8%
American Indian Alone	45	0.3%	285	0.3%	386	0.2%
Asian Alone	786	5.2%	10,033	9.1%	17,305	9.3%
Pacific Islander Alone	2	0.0%	79	0.1%	51	0.0%
Some Other Race Alone	103	0.7%	779	0.7%	948	0.5%
Two or More Races	408	2.7%	2,927	2.7%	5,360	2.9%
Hispanic Origin (Any Race)	525	3.5%	3,447	3.1%	4,512	2.4%

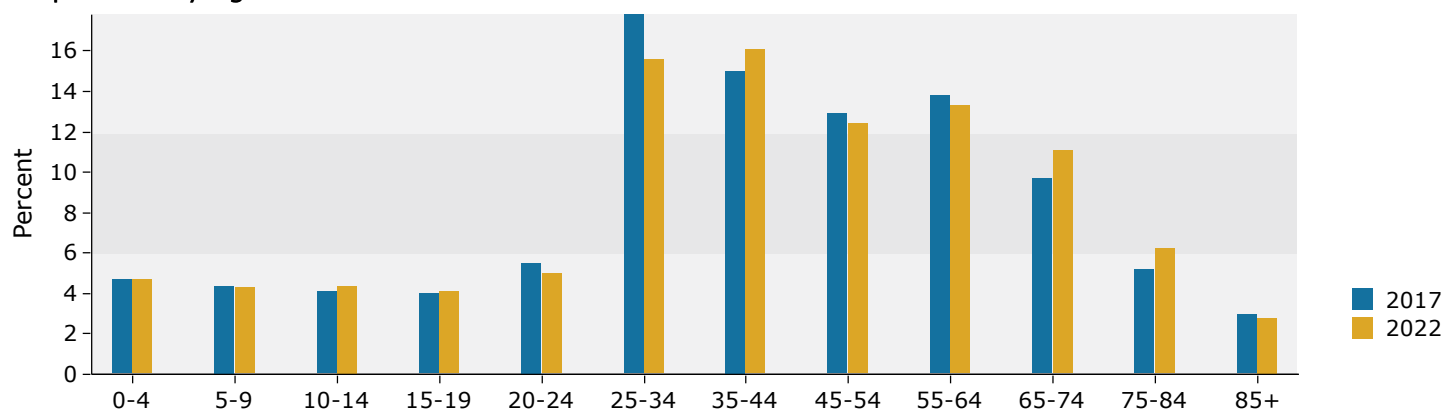
Source: U.S. Census Bureau, Census 2010 Summary File 1. Esri forecasts for 2017 and 2022.

0 - 1 mile

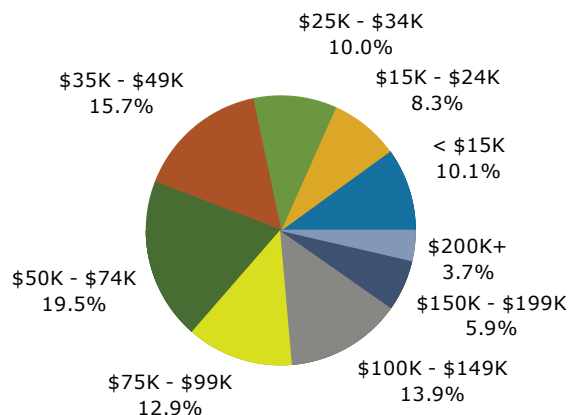
Trends 2017-2022



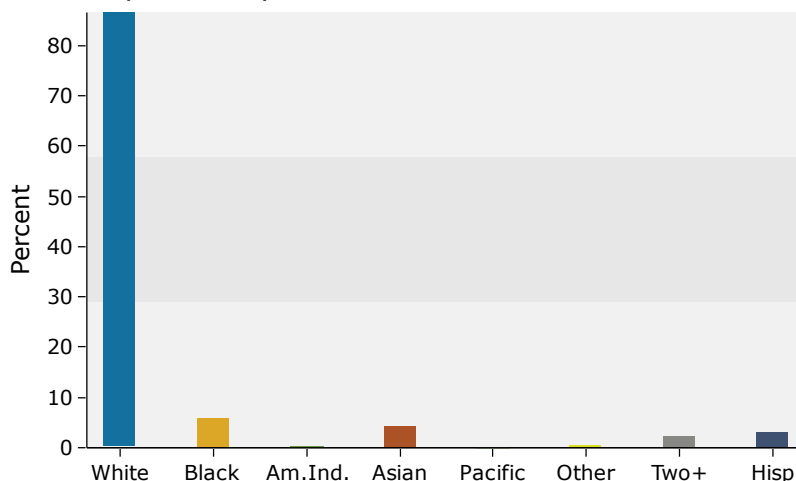
Population by Age



2017 Household Income



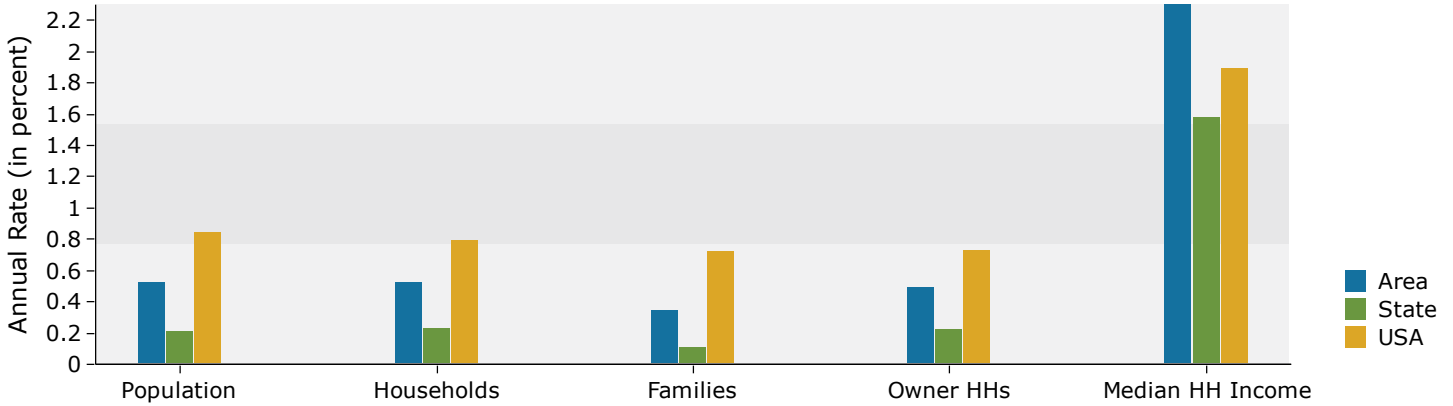
2017 Population by Race



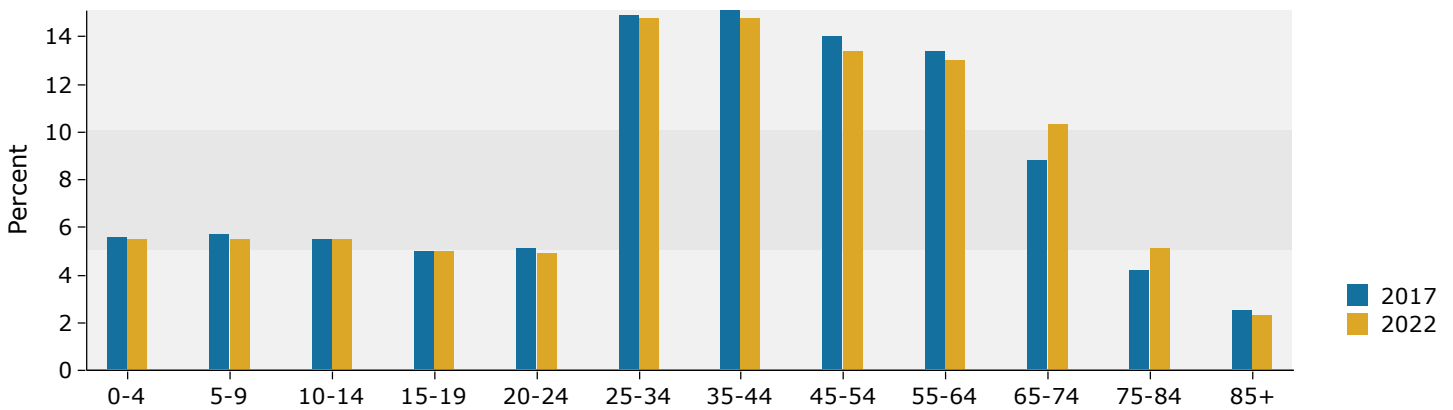
Source: U.S. Census Bureau, Census 2010 Summary File 1. Esri forecasts for 2017 and 2022.

1 - 3 mile

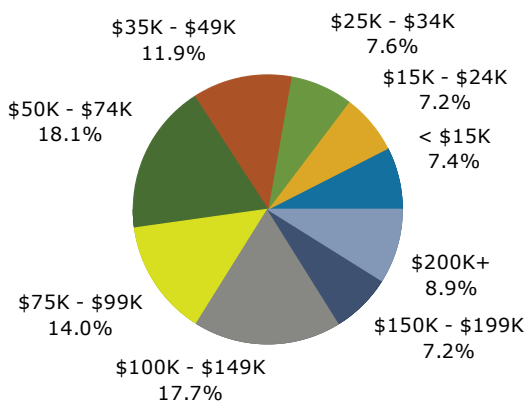
Trends 2017-2022



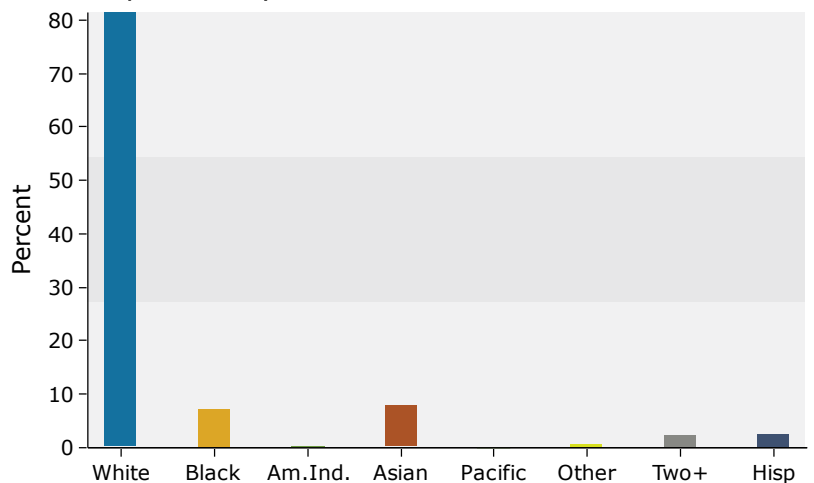
Population by Age



2017 Household Income



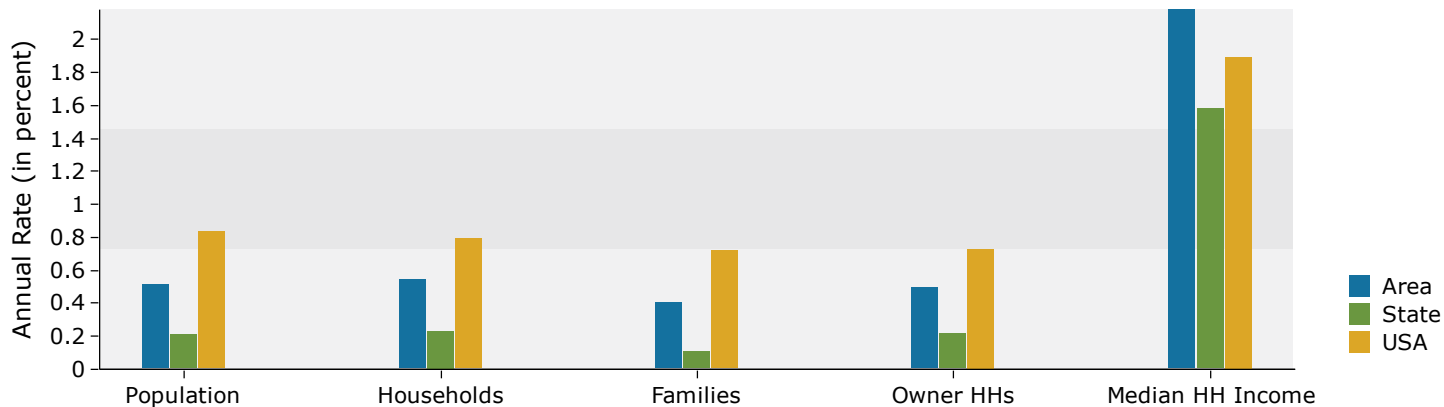
2017 Population by Race



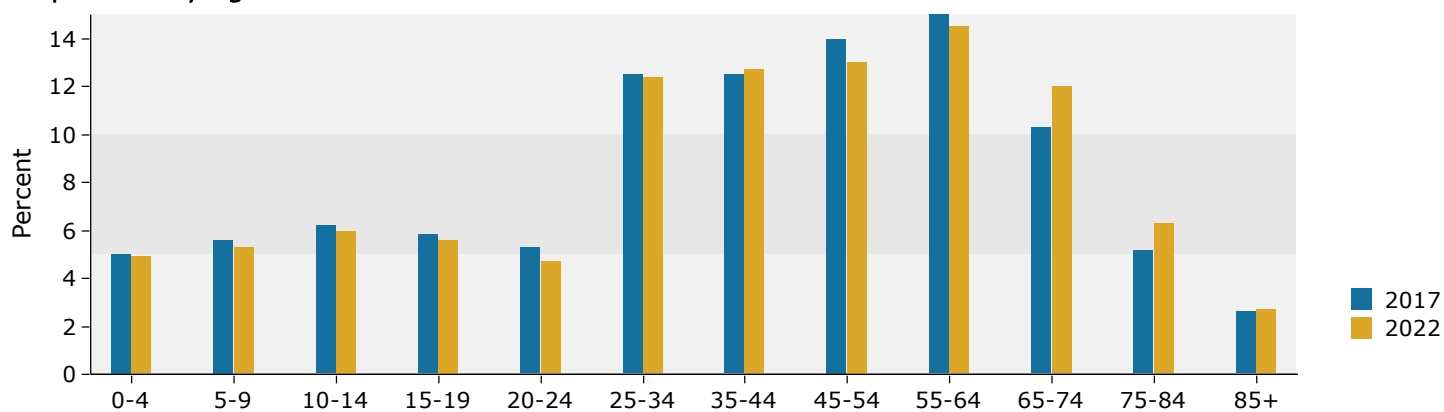
Source: U.S. Census Bureau, Census 2010 Summary File 1. Esri forecasts for 2017 and 2022.

3 - 5 mile

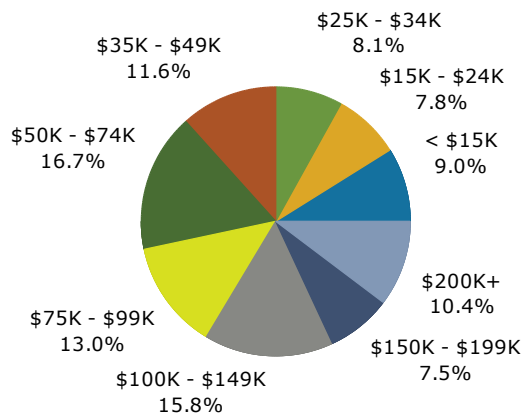
Trends 2017-2022



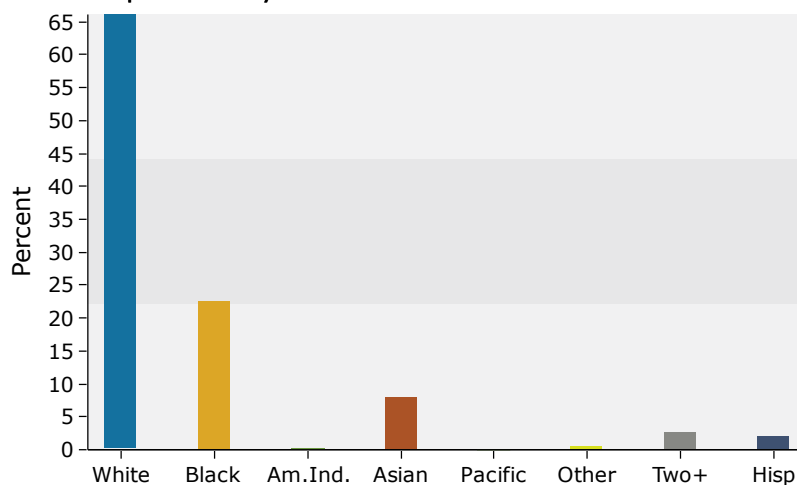
Population by Age



2017 Household Income



2017 Population by Race



Source: U.S. Census Bureau, Census 2010 Summary File 1. Esri forecasts for 2017 and 2022.