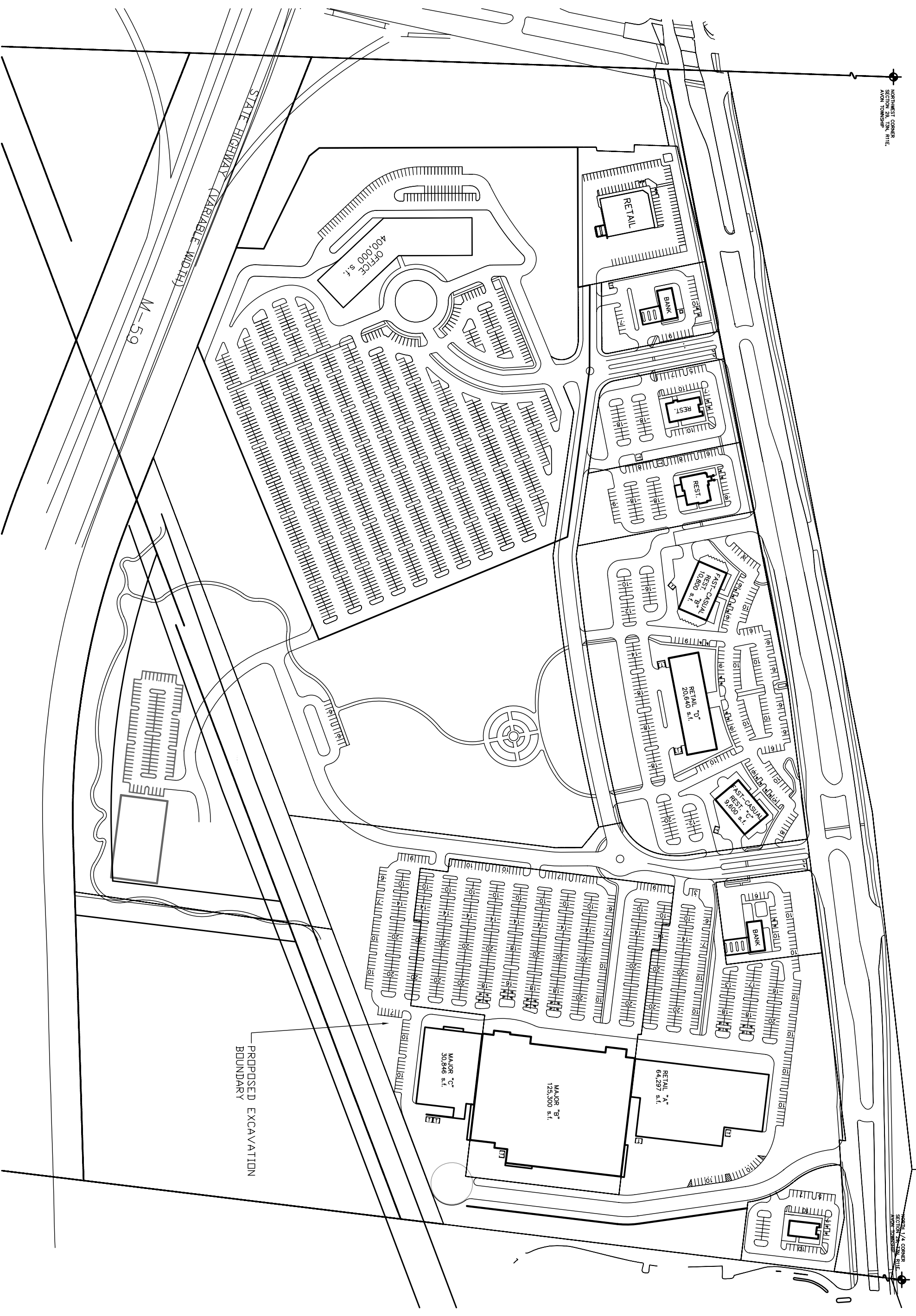


NORTHWEST CORNER
SECTION 28, T3N, R11E,
AVON TOWNSHIP

NORTH 1/4 CORNER
SECTION 28, T3N, R11E,
AVON TOWNSHIP



M-59

STATE HIGHWAY (VARIABLE WIDTH)

PROPOSED EXCAVATION
BOUNDARY

OFFICE
400,000 s.f.

RETAIL

BANK

REST.

REST.

FAST-CASUAL
REST. 'B'
10,200 s.f.

RETAIL 'D'
20,640 s.f.

FAST-CASUAL
REST. 'C'
9,000 s.f.

BANK

MAJOR 'C'
30,846 s.f.

MAJOR 'B'
123,300 s.f.

RETAIL 'A'
64,297 s.f.

CHURCH