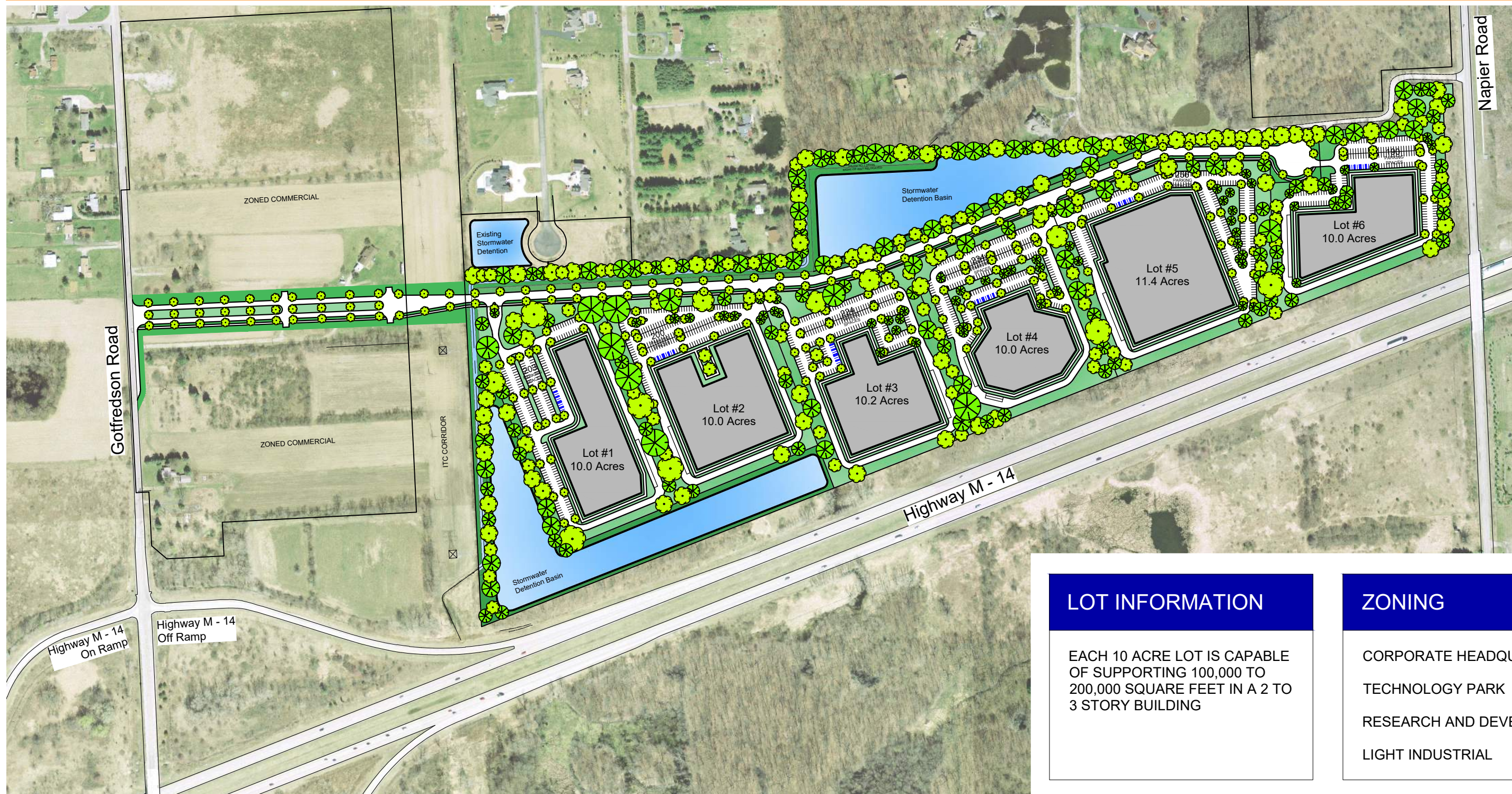


SALEM TOWNSHIP

NEW 90 ACRE DEVELOPMENT OPPORTUNITY

NE CORNER OF GOTTFREDSON ROAD & M-14
SALEM TOWNSHIP, MICHIGAN



LOT INFORMATION

EACH 10 ACRE LOT IS CAPABLE OF SUPPORTING 100,000 TO 200,000 SQUARE FEET IN A 2 TO 3 STORY BUILDING

ZONING

- CORPORATE HEADQUARTERS
- TECHNOLOGY PARK
- RESEARCH AND DEVELOPMENT
- LIGHT INDUSTRIAL