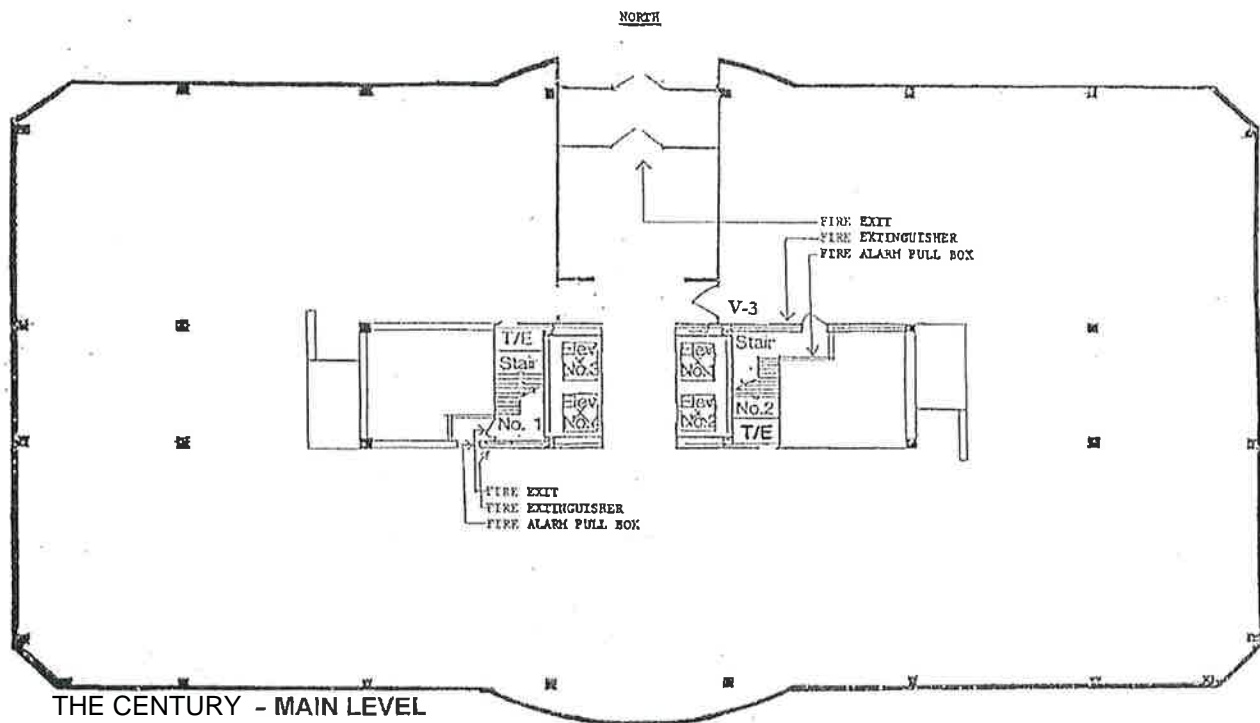


## THE CENTURY - LOWER LEVEL

### TO ALERT THE BUILDING OF A FIRE

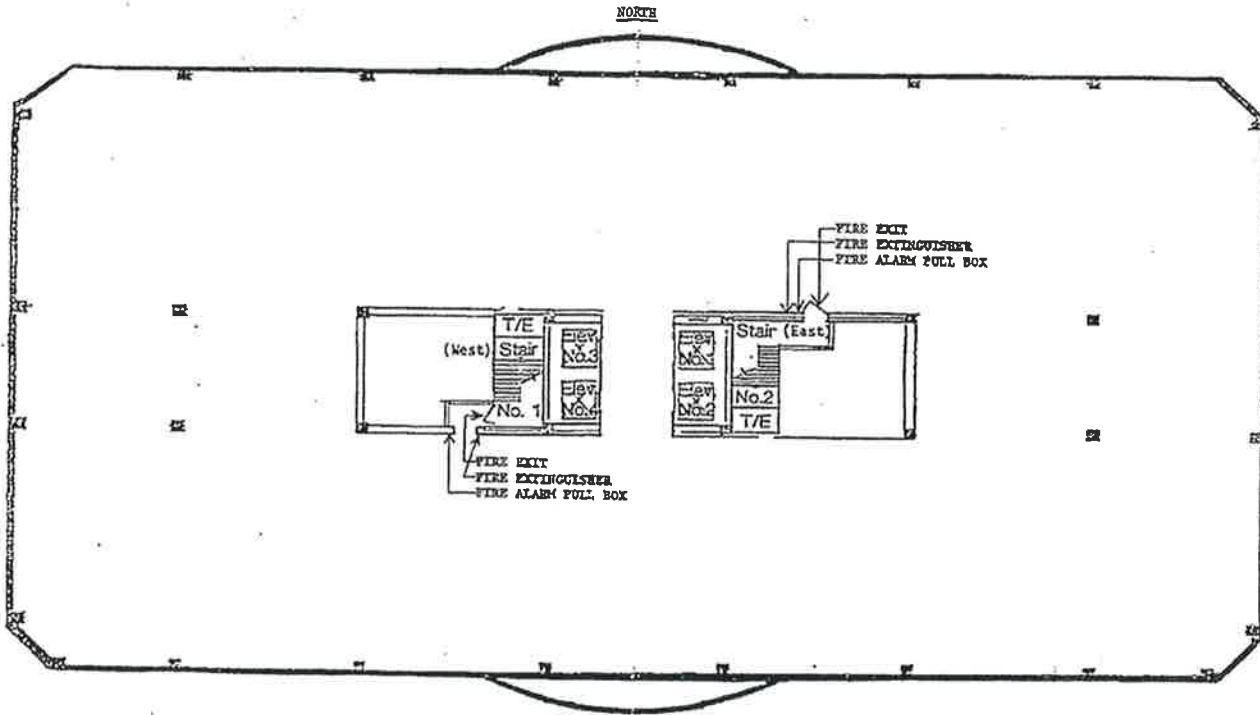
1. Call the Fire Dept. at 911 and Bldg. Mgmt. at (240) 740-6000.
2. Attempt to extinguish the fire, if minor.
3. Isolate the fire by closing the doors in the fire area.
4. Assist people in the immediate fire area to safety.
5. Evacuate by leading people calmly & quickly through the nearest stairwell or preplanned escape route.
6. **DO NOT** use elevators.
7. If the preplanned escape route is full of smoke, direct people to an alternate stairwell or secondary escape route.
8. Do not attempt reentry until the all clear signal is given by the Fire Dept.

NORTH



TO ALERT THE BUILDING OF A FIRE

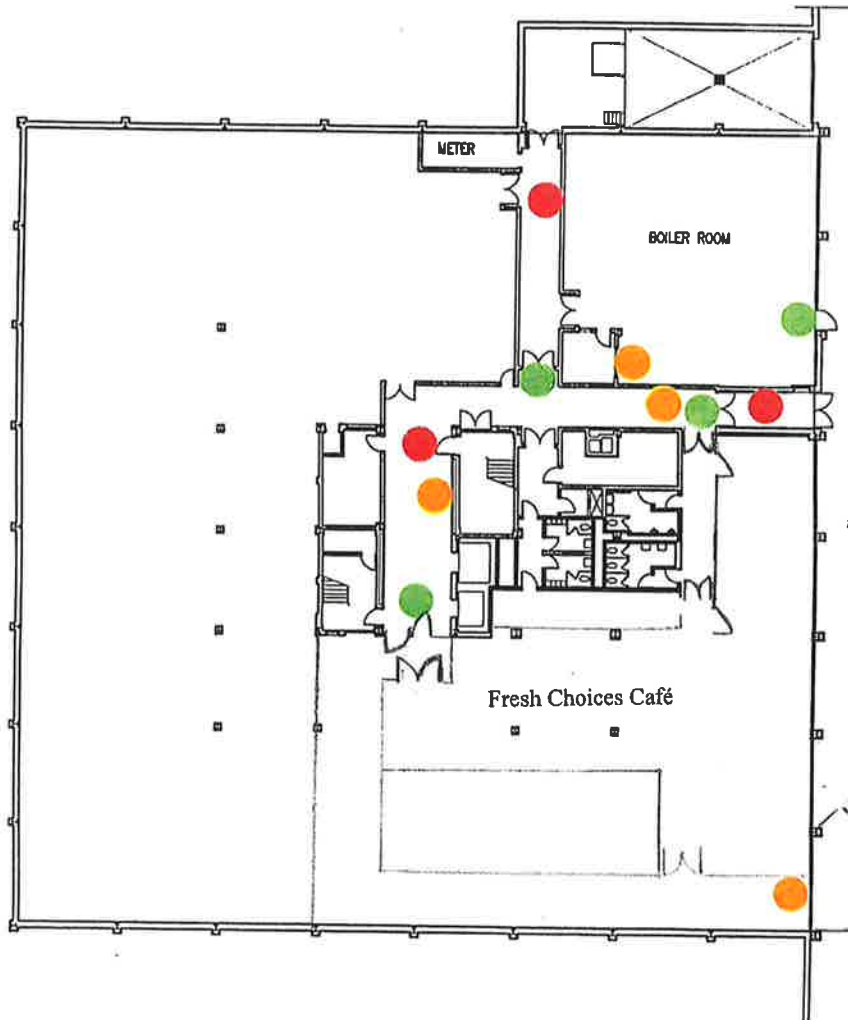
1. Call the Fire Dept. at **911** and Bldg. Mgmt. at (248) 746-6000.
2. Attempt to extinguish the fire, if minor.
3. Isolate the fire by closing the doors in the fire area.
4. Assist people in the immediate fire area to safety.
5. Evacuate by leading people calmly & quickly through the nearest stairwell or preplanned escape route.
6. **DO NOT** use elevators.
7. If the preplanned escape route is full of smoke, direct people to an alternate stairwell or secondary escape route.



## THE CENTURY - FLOORS 2 THROUGH 11

### TO ALERT THE BUILDING OF A FIRE

1. Call the Fire Dept. at **911** and Bldg. Mgmt. at (248) 748-6000.
2. Attempt to extinguish the fire, if minor.
3. Isolate the fire by closing the doors in the fire area.
4. Assist people in the immediate fire area to safety.
5. Evacuate by leading people calmly & quickly through the nearest stairwell or preplanned escape route.
6. **DO NOT** use elevators.
7. If the preplanned escape route is full of smoke, direct people to an alternate stairwell or secondary escape route.
8. Do not attempt reentry until the all clear signal is given by the Fire Dept.



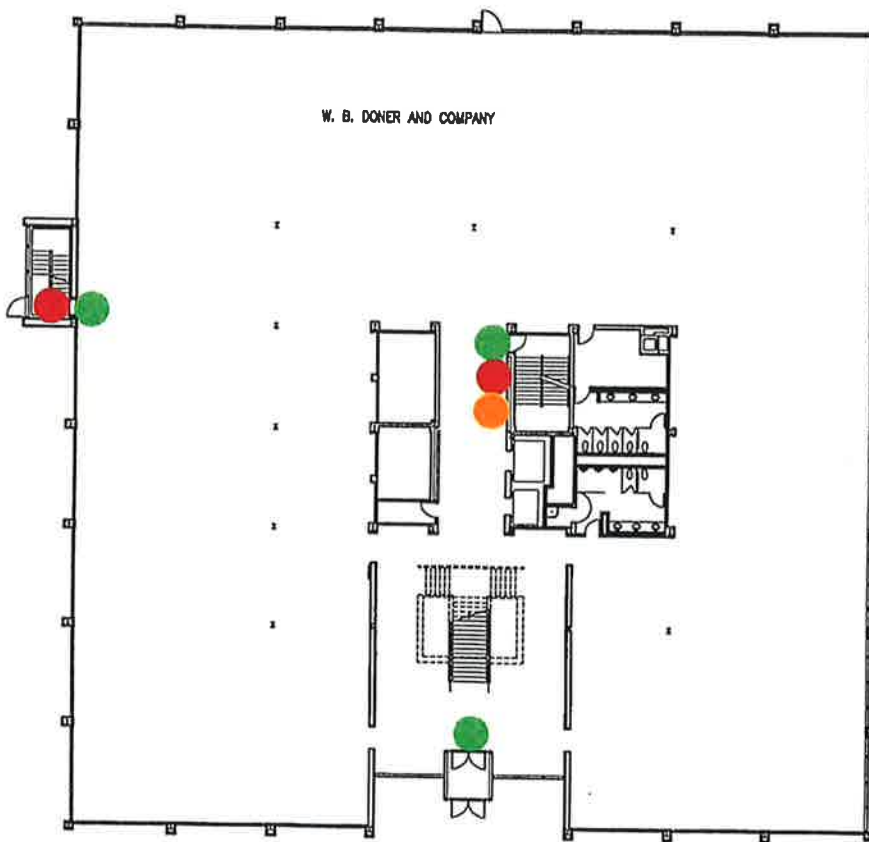
**DONER – LOWER LEVEL**

TO ALERT THE BUILDING OF A FIRE

1. Call the Fire Dept. at **911** and Bldg. Mgmt. at (248) 746-5000.
2. Attempt to extinguish the fire, if minor.
3. Isolate the fire by closing the doors in the fire area.
4. Assist people in the immediate fire area to safety.
5. Evacuate by leading people calmly & quickly through the nearest stairwell or preplanned escape route.
6. **DO NOT** use elevators.
7. If the preplanned escape route is full of smoke, direct people to an alternate stairwell or secondary escape route.
8. Do not attempt reentry until the all clear signal is given by the Fire Dept.

- Fire Extinguisher
- Fire Alarm Pull Box
- Fire Exit





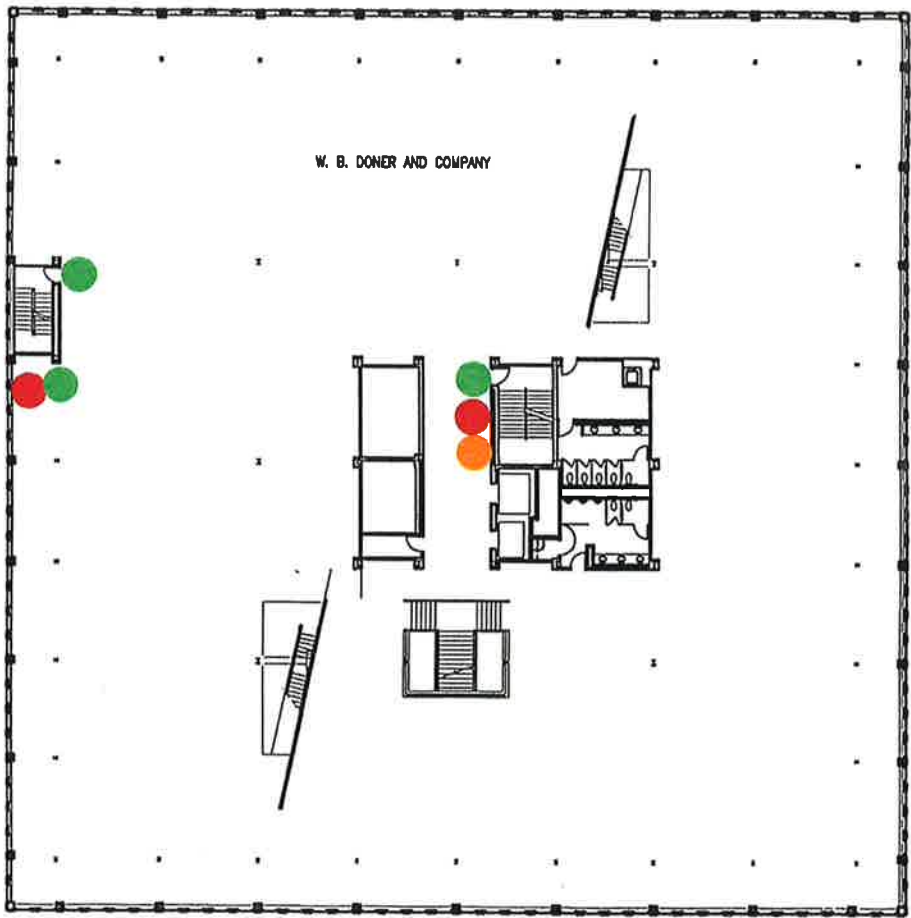
## DONER – FIRST FLOOR

### TO ALERT THE BUILDING OF A FIRE

1. Call the Fire Dept. at **911** and Bldg. Mgmt. at (248) 746-6000.
2. Attempt to extinguish the fire, if minor.
3. Isolate the fire by closing the doors in the fire area.
4. Assist people in the immediate fire area to safety.
5. Evacuate by leading people calmly & quickly through the nearest stairwell or preplanned escape route.
6. **DO NOT** use elevators.
7. If the preplanned escape route is full of smoke, direct people to an alternate stairwell or secondary escape route.
8. Do not attempt reentry until the all clear signal is given by the Fire Dept.

- Fire Extingulsher
- Fire Alarm Pull Box
- Fire Exit





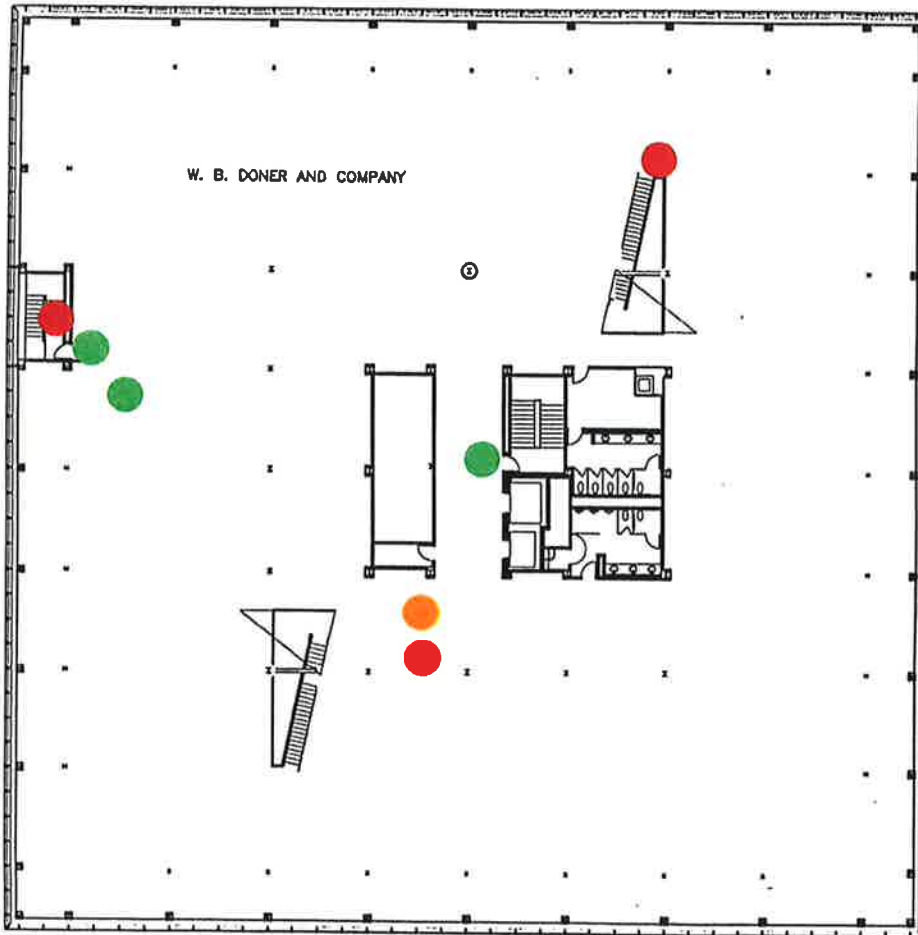
## DONER – SECOND FLOOR

### TO ALERT THE BUILDING OF A FIRE

1. Call the Fire Dept. at **911** and Bldg. Mgmt. at (248) 746-6000.
2. Attempt to extinguish the fire, if minor.
3. Isolate the fire by closing the doors in the fire area.
4. Assist people in the immediate fire area to safety.
5. Evacuate by leading people calmly & quickly through the nearest stairwell or preplanned escape route.
6. **DO NOT** use elevators.
7. If the preplanned escape route is full of smoke, direct people to an alternate stairwell or secondary escape route.
8. Do not attempt reentry until the all clear signal is given by the Fire Dept.

-  Fire Extinguisher
-  Fire Alarm Pull Box
-  Fire Exit

NORTH  
⊕



W. B. DONER AND COMPANY

## DONER – THIRD FLOOR

### TO ALERT THE BUILDING OF A FIRE

1. Call the Fire Dept. at **911** and Bldg. Mgmt. at (248) 746-6000.
2. Attempt to extinguish the fire, if minor.
3. Isolate the fire by closing the doors in the fire area.
4. Assist people in the immediate fire area to safety.
5. Evacuate by leading people calmly & quickly through the nearest stairwell or preplanned escape route.
6. **DO NOT** use elevators.
7. If the preplanned escape route is full of smoke, direct people to an alternate stairwell or secondary escape route.
8. Do not attempt reentry until the all clear signal is given by the Fire Dept.

-  Fire Extinguisher
-  Fire Alarm Pull Box
-  Fire Exit

NORTH  
