

25800 Northwestern Hwy, Southfield

OWNED AND DEVELOPED BY:

**Schostak**  
BROTHERS & COMPANY

Introducing:



# THE CENTURY

“A testament to 100 years of excellence”

LEASED BY:  JLL

AJ WEINER  
[aj.weiner@am.jll.com](mailto:aj.weiner@am.jll.com)

BEN SCHRODE  
[ben.schrode@am.jll.com](mailto:ben.schrode@am.jll.com)

# PROPERTY INFO



Up to 50,000 SF contiguous space available



Full floors available (22,049 SF)



Direct access to M-10 & I-696



New cafeteria and outdoor seating



High visibility building and monument signage available



Award winning property (BOMA TOBY)



Attached covered parking deck (1,128 covered/ 115 surface)



Energy Star Labeled



Chiller replacement



HVAC controls



Newly renovated lobby, corridors and restrooms



LED lighting



Pick-up dry cleaning



Bike share program



Located near Southfield's city center



On-site management with 24hr security monitoring

# NEW RENOVATIONS



LOUNGE



CAFE



DECK

# AT THE CENTURY



Café and courtyard seating renovations



New in 2020: Tenant lounge & fitness center



Service level lobby and common area upgrades

# STACKING PLAN

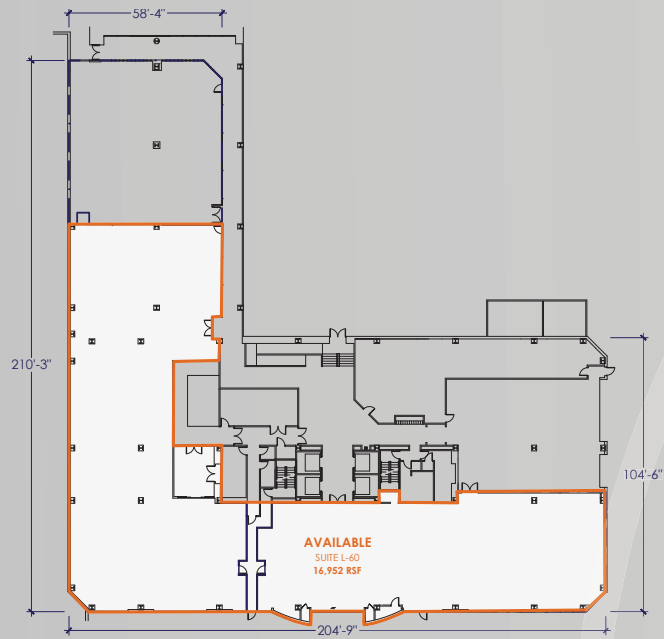
FLOOR



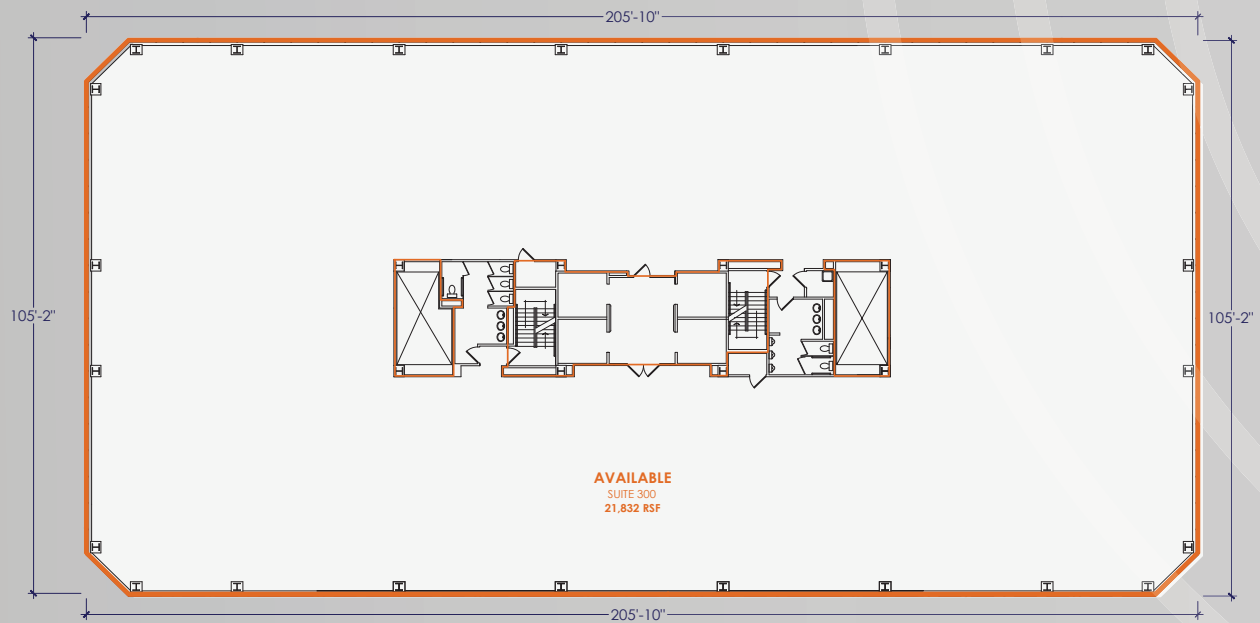
LEGEND

- Available space
- Leased space

# AVAILABILITIES

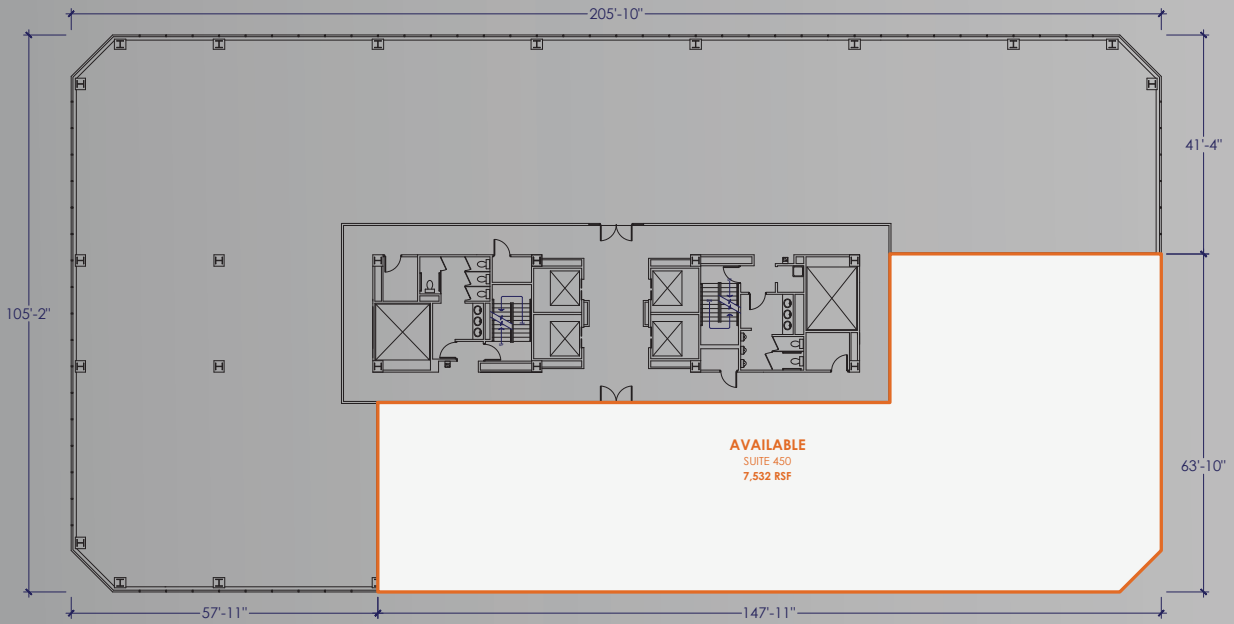


**GARDEN LEVEL / SUITE L-60**  
16,952 SF

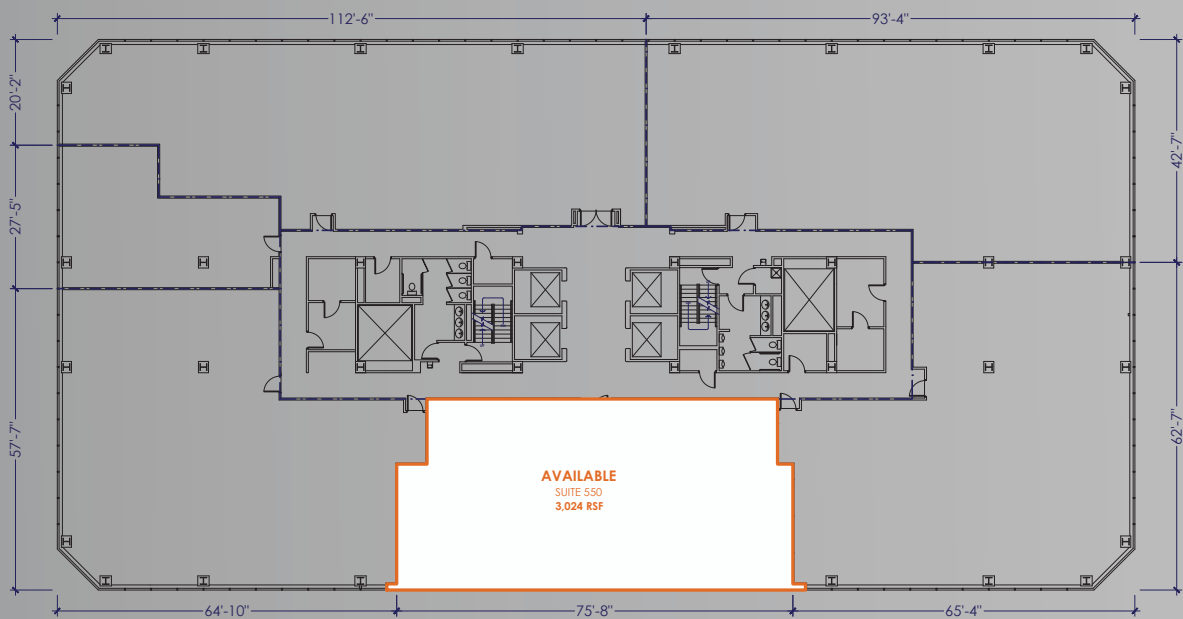


**3<sup>RD</sup> FLOOR / SUITE 300**  
21,832 SF

# AVAILABILITIES

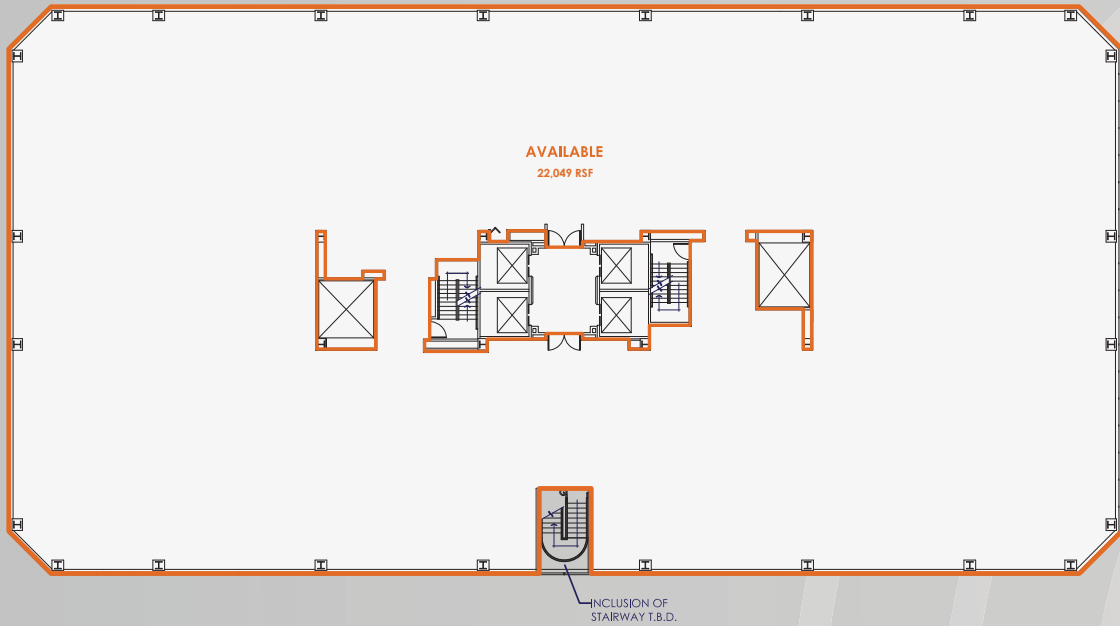


**4<sup>TH</sup> FLOOR / SUITE 450**  
7,532 SF

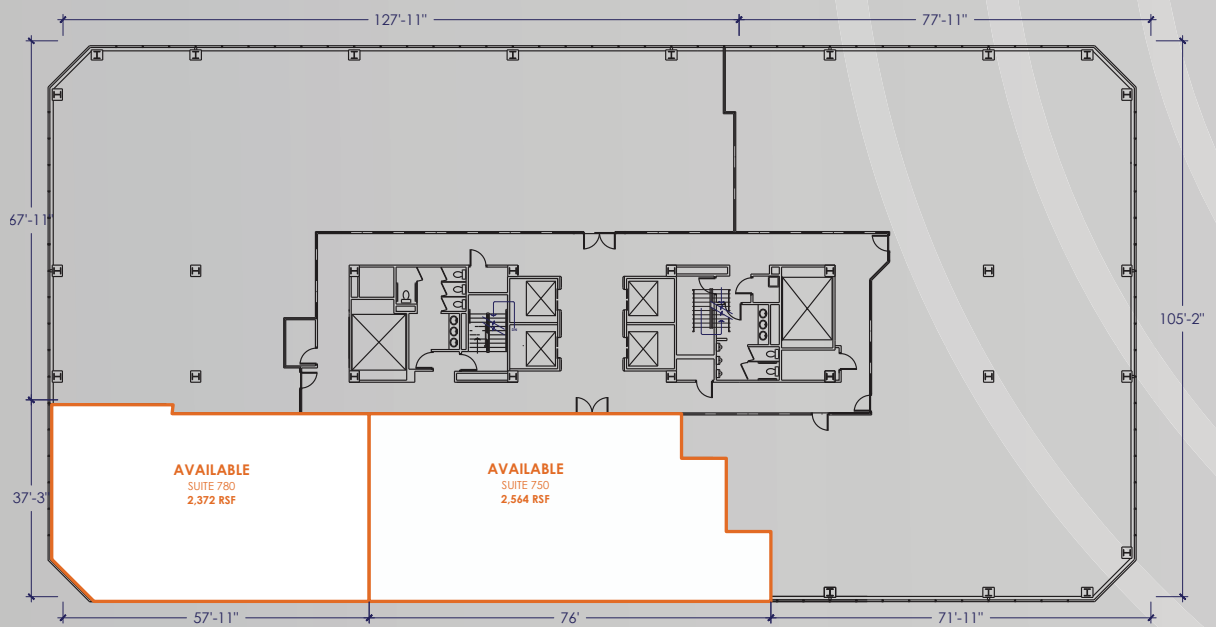


**5<sup>TH</sup> FLOOR / SUITE 550**  
3,024 SF

# AVAILABILITIES



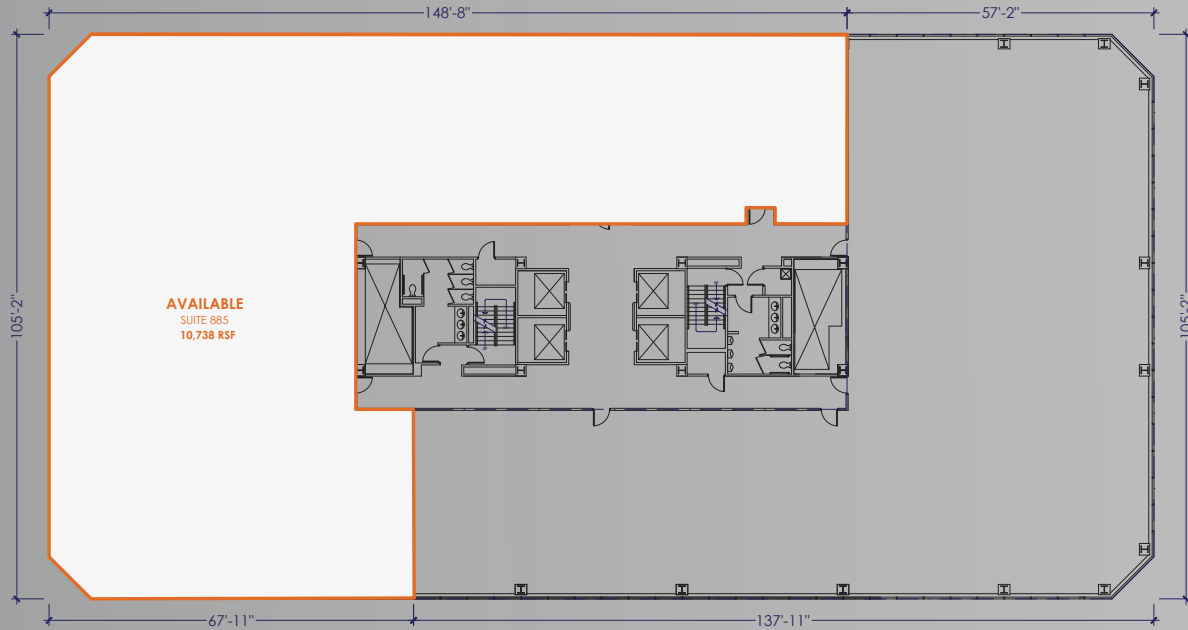
**6<sup>TH</sup> FLOOR / SUITE 600**  
22,049 SF



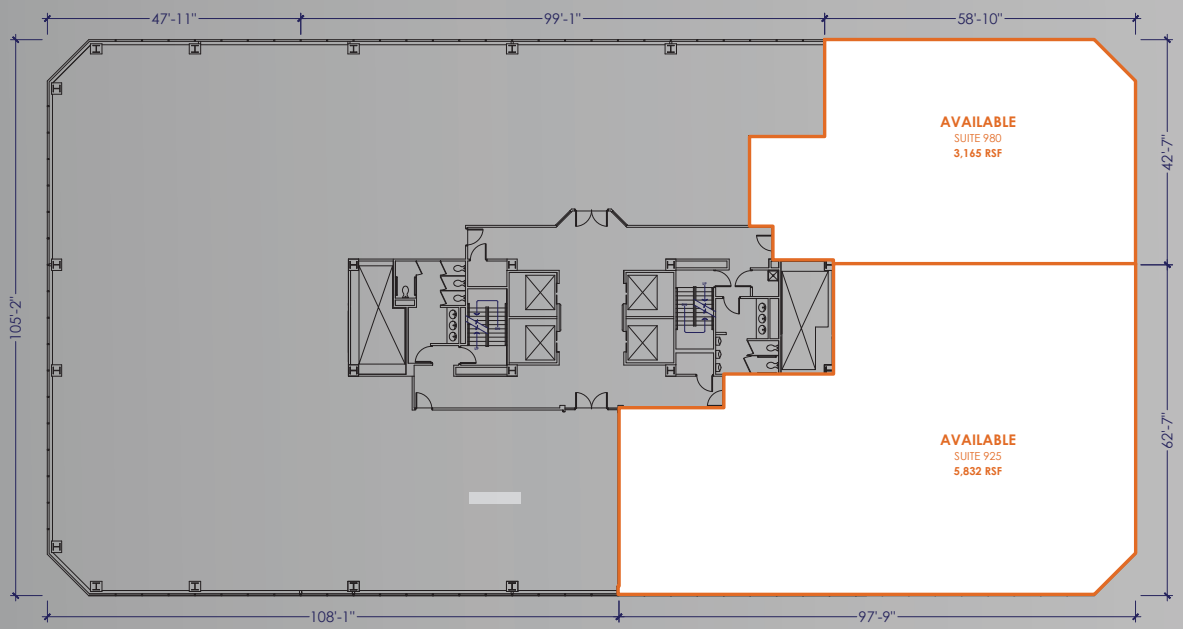
**7<sup>TH</sup> FLOOR / SUITE 750-780**  
4,936 SF



# AVAILABILITIES

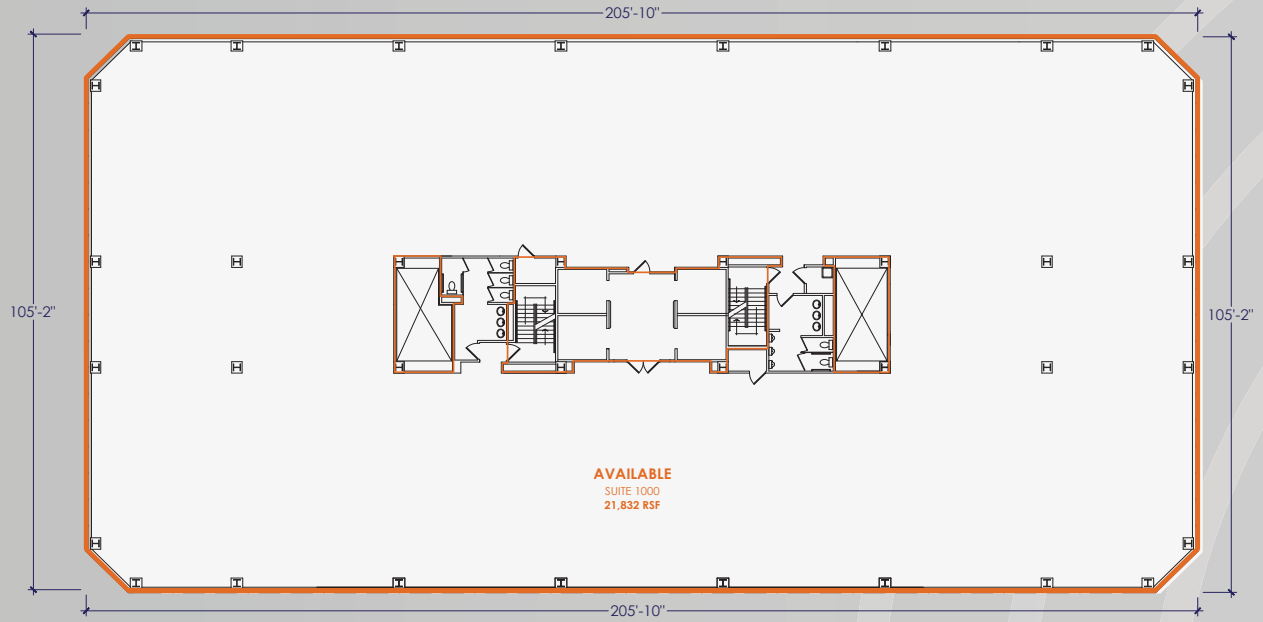


**8TH FLOOR - SUITE 885**  
10,738 SF

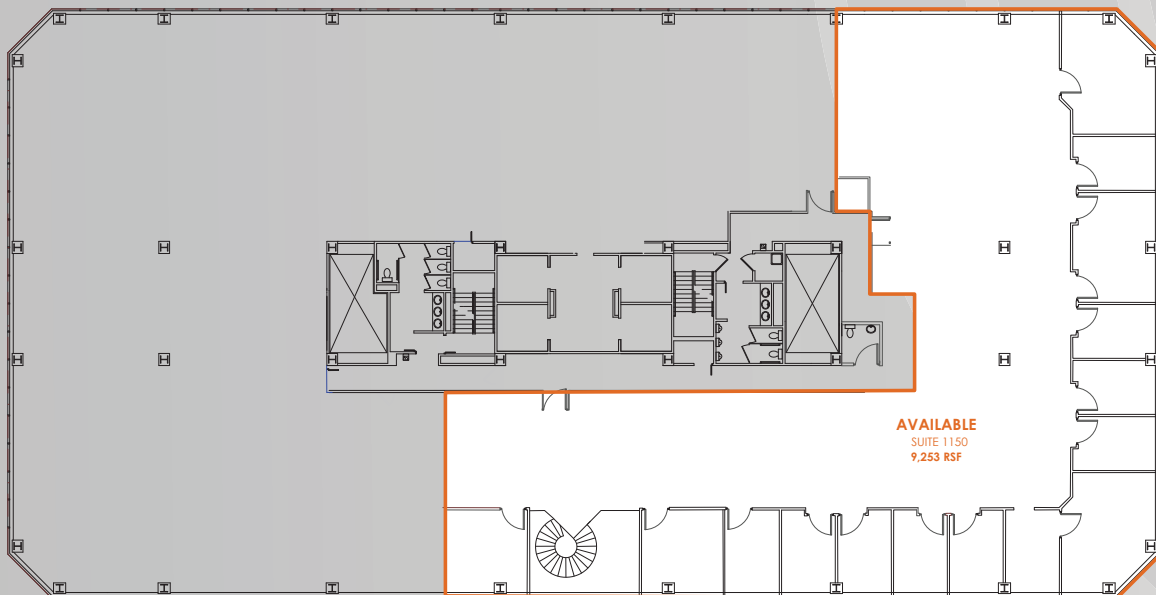


**9TH FLOOR - SUITES 980-925**  
8,997 SF

# AVAILABILITIES



**10<sup>TH</sup> FLOOR / SUITE 1000**  
21,832 SF



**11<sup>TH</sup> FLOOR / SUITE 1150**  
9,253 SF

# SITE MAP





THE CENTURY

**The Century**

25800 Northwestern Hwy, Southfield, Michigan

Broker information:

**AJ WEINER**

[aj.weiner@am.jll.com](mailto:aj.weiner@am.jll.com)

**BEN SCHRODE**

[ben.schrode@am.jll.com](mailto:ben.schrode@am.jll.com)



©2019 Jones Lang LaSalle IP, Inc. All rights reserved. All information contained herein is from sources deemed reliable; however, no representation or warranty is made to the accuracy thereof.

Jones Lang LaSalle Brokerage, Inc., Real Estate License # 01856260